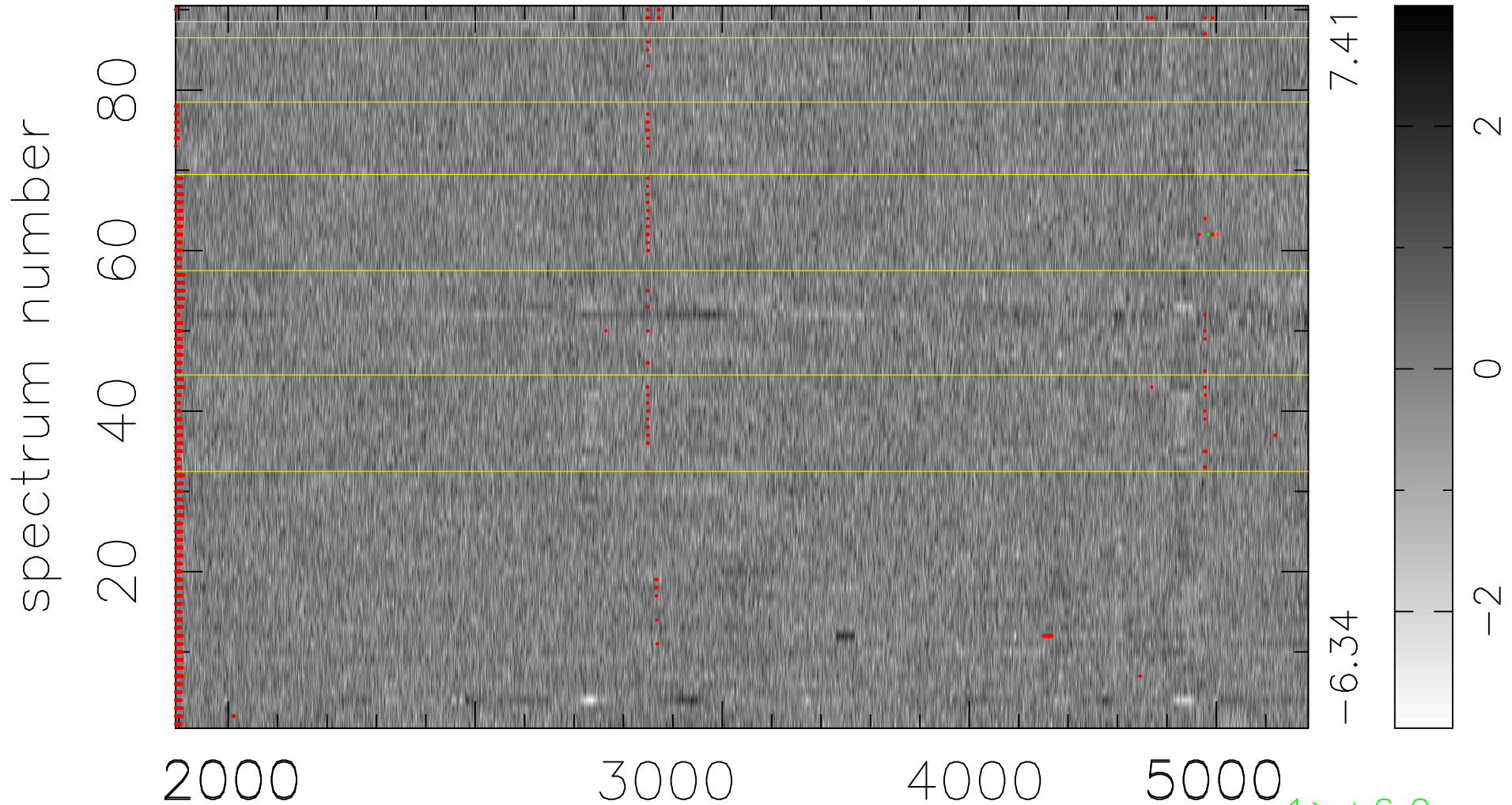


$$\chi(\lambda, t) = (\text{Data} - \text{Model AC}_5\text{F}) / \sigma \chi$$

$$\chi^2 / (412740 - 5052) = 0.917 \Rightarrow 1.007$$

4586x90



bad:1934=0.47% λ (Å) $z = 0.89095$

1 > +6.0σ

1 < -6.0σ