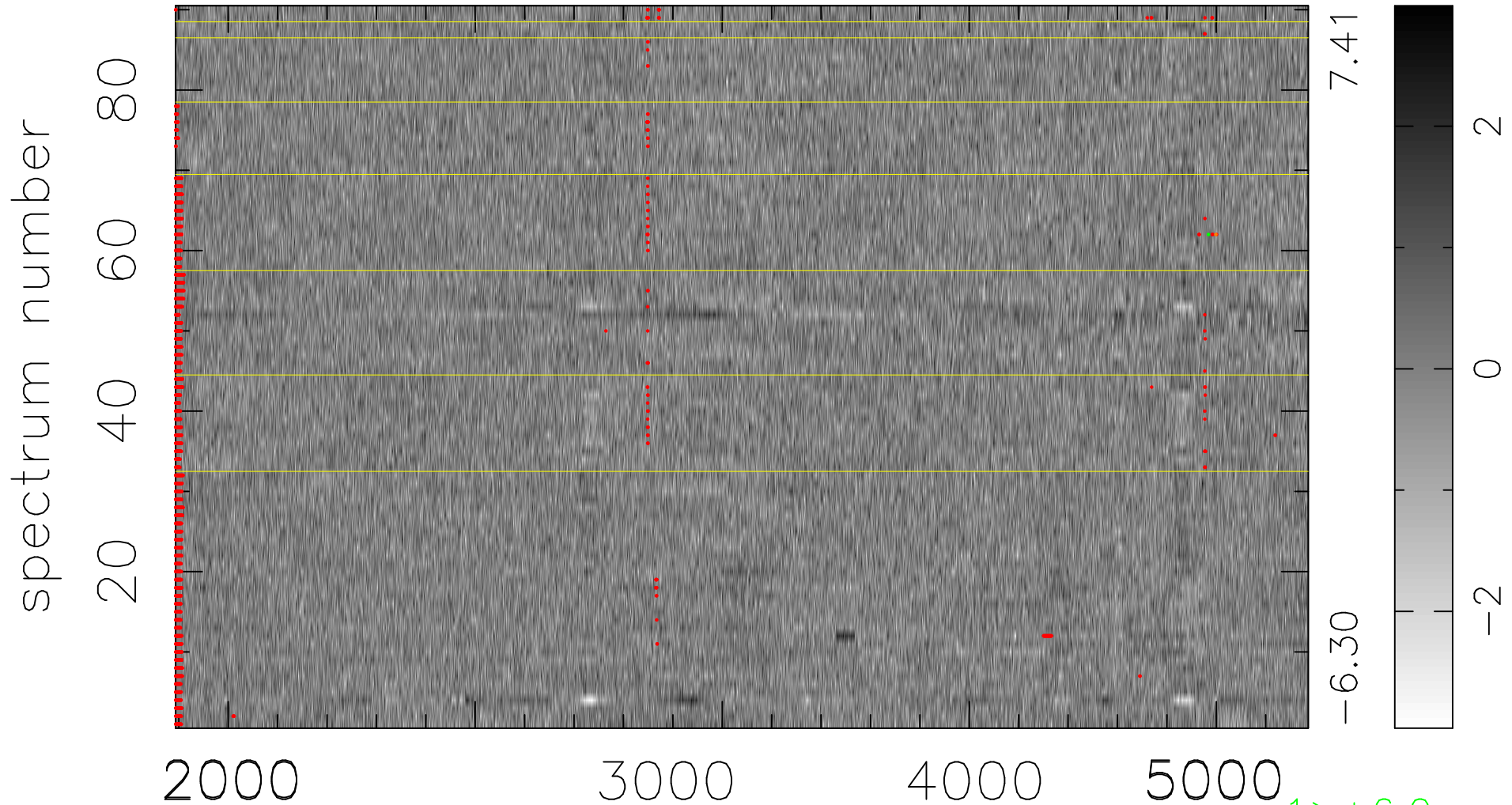


$$\chi(\lambda,t) = (\text{Data} - \text{Model } AC_5) / \sigma \chi$$

$$\chi^2 / (412740 - 4962) = 0.919 \Rightarrow 1.007$$

4586x90



bad:1934=0.47% λ (Å) $z = 0.89095$

1 > +6.0 σ

1 < -6.0 σ