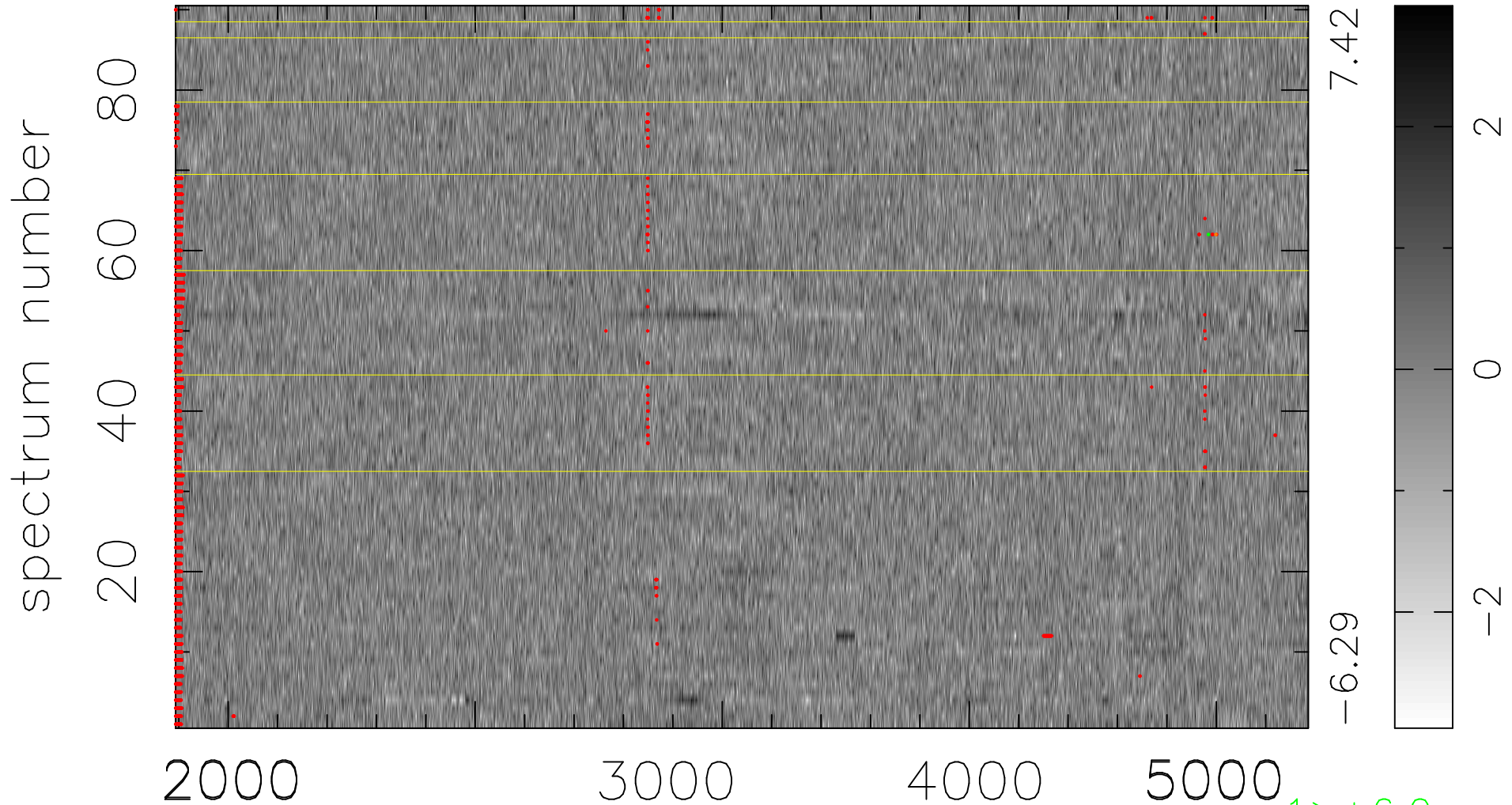


$$\chi(\lambda, t) = ( \text{Data} - \text{Model } \text{AC}_5\text{B}_4\text{F} ) / \sigma \chi$$

$$\chi^2 / (412740 - 5185) = 0.910 \Rightarrow 1.007$$

4586x90



bad:1934=0.47%  $\lambda$  (Å)  $z = 0.89095$

$1 > +6.0\sigma$   
 $1 < -6.0\sigma$