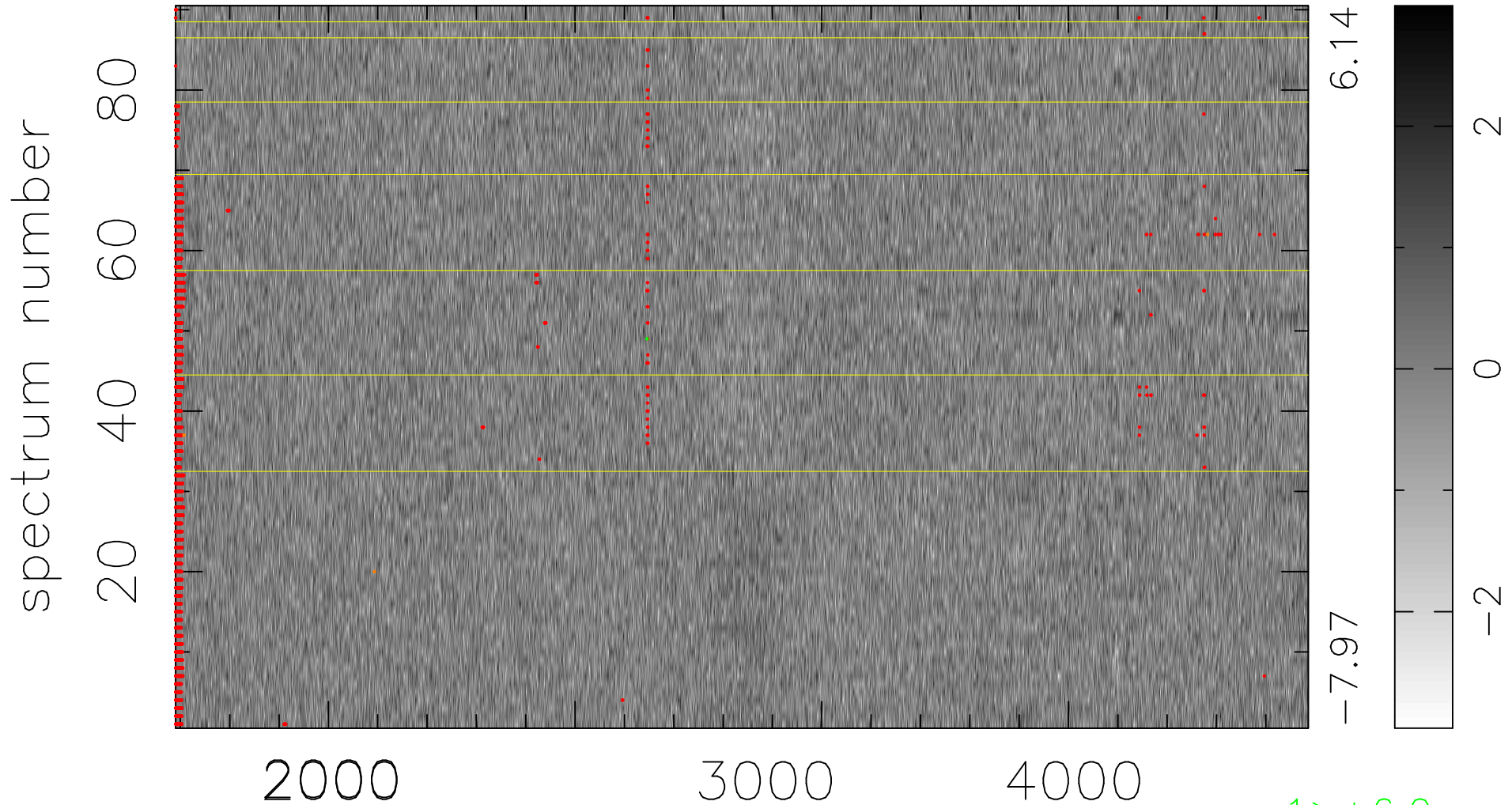


$$\chi(\lambda, t) = (\text{Data} - \text{Model } \text{AC}_5\text{B}_4\text{F}) / \sigma \chi$$

$$\chi^2 / (413280 - 5230) = 0.897 \Rightarrow 1.007$$

4592x90



6.14

-7.97

2

0

-2

bad:2083=0.50% λ (Å) $z = 1.07549$

1 > +6.0 σ

3 < -6.0 σ