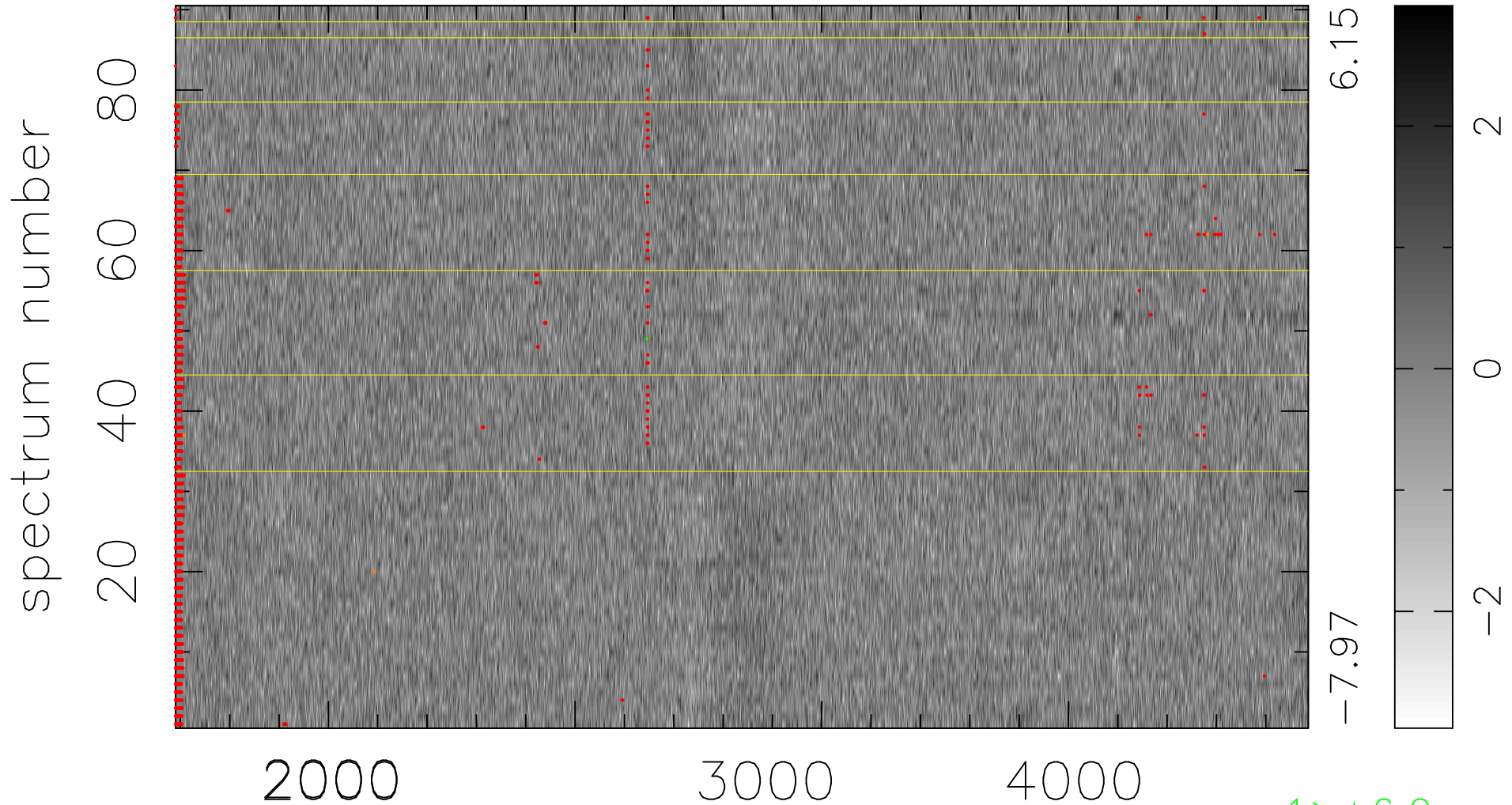


$$\chi(\lambda, t) = (\text{Data} - \text{Model AC}_5\text{F}) / \sigma \chi$$

$$\chi^2 / (413280 - 5072) = 0.899 \Rightarrow 1.007$$

4592x90



bad:2083=0.50% λ (Å) $z = 1.07549$

1 > +6.0 σ
3 < -6.0 σ