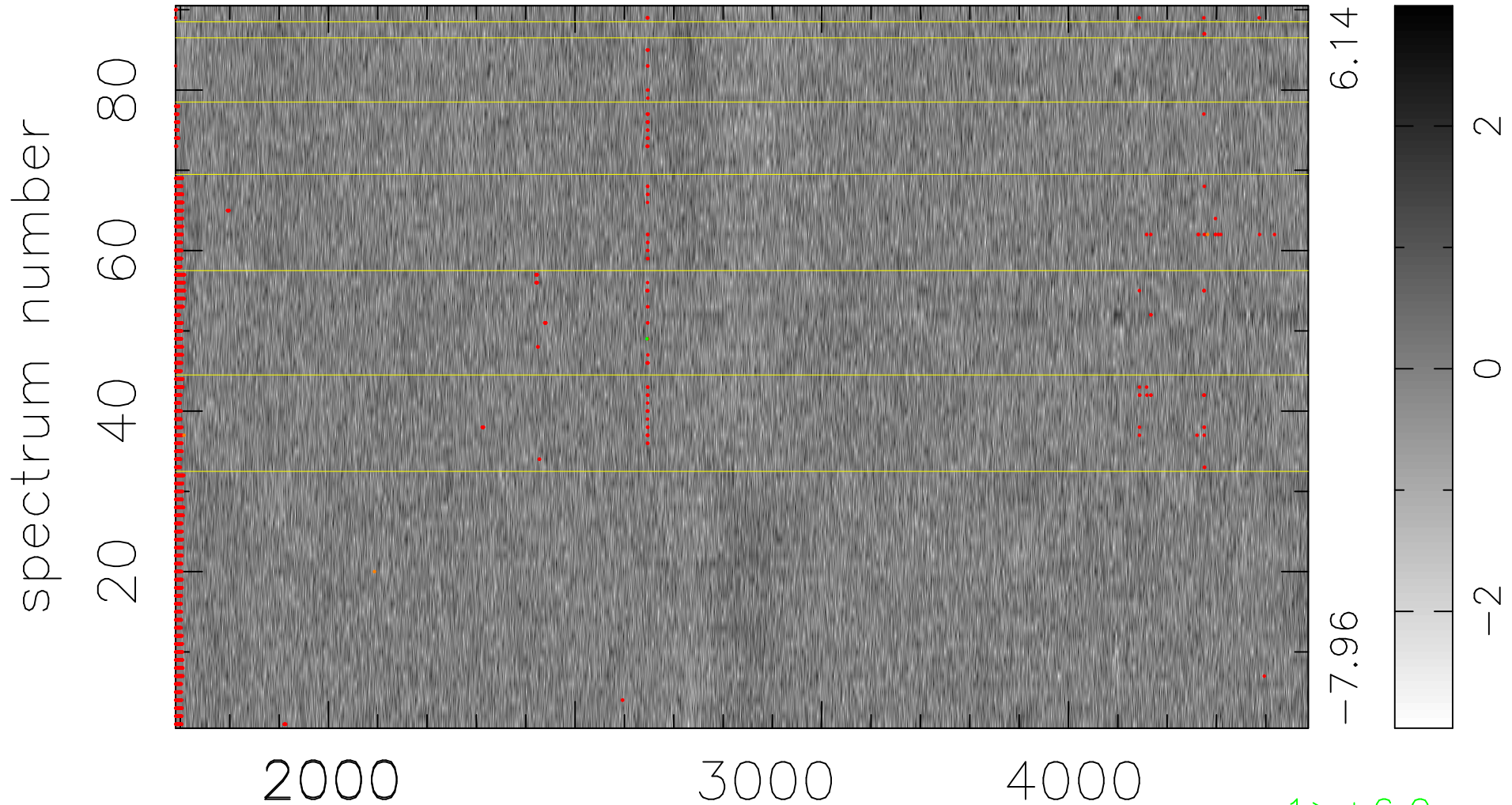


$$\chi(\lambda, t) = ( \text{Data} - \text{Model } AC_5 ) / \sigma \chi$$

$$\chi^2 / (413280 - 4982) = 0.899 \Rightarrow 1.007$$

4592x90



bad:2083=0.50%     $\lambda$  (Å)     $z = 1.07549$

1 > +6.0σ  
3 < -6.0σ