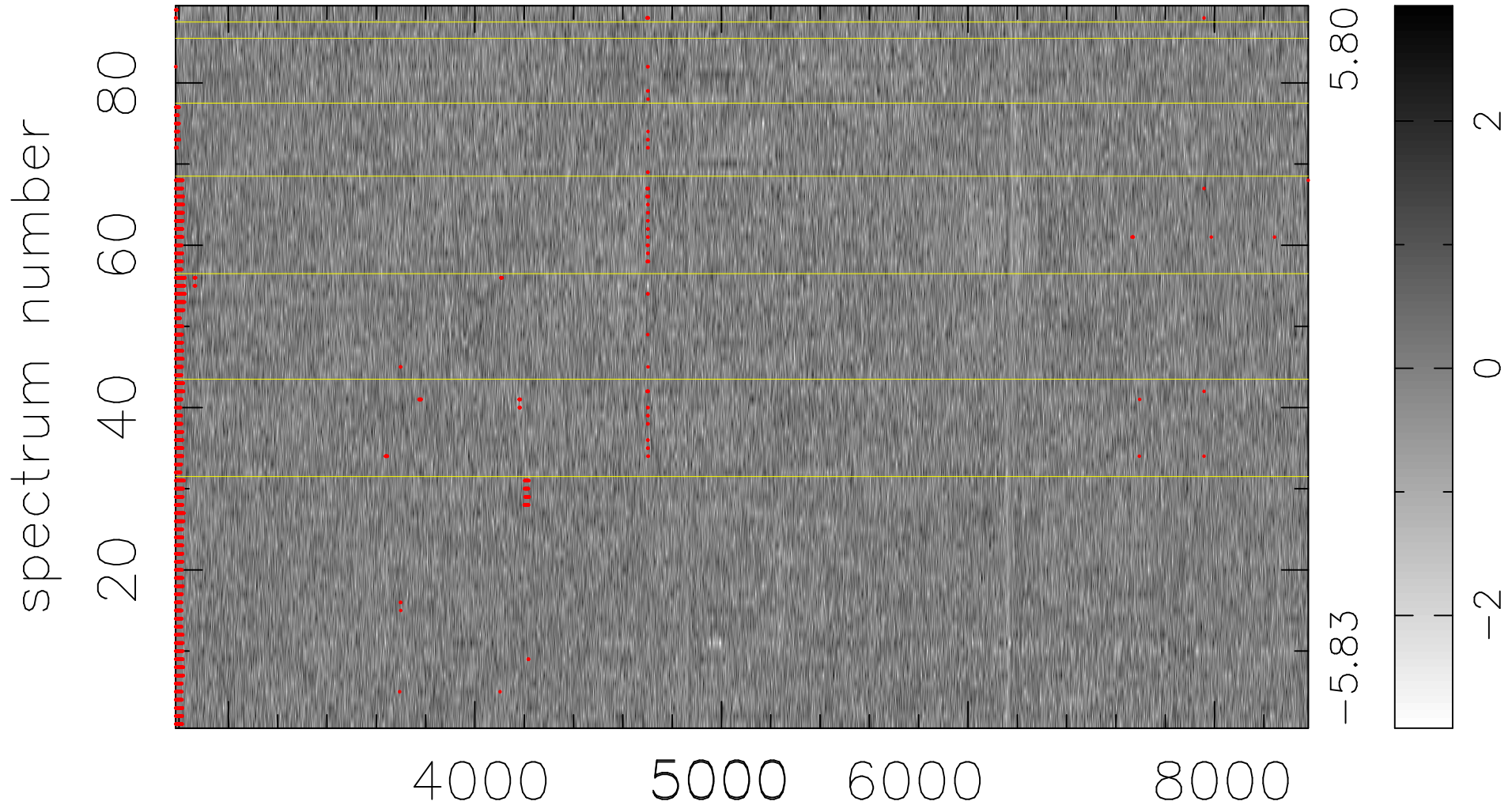


$$\chi(\lambda, t) = ( \text{Data} - \text{Model } \text{AC}_5\text{B}_4\text{F} ) / \sigma \chi$$

$$\chi^2 / (408955 - 5267) = 0.910 \Rightarrow 0.989$$

4595x89



bad:2267=0.55%  $\lambda$  (Å)  $z = 0.19233$