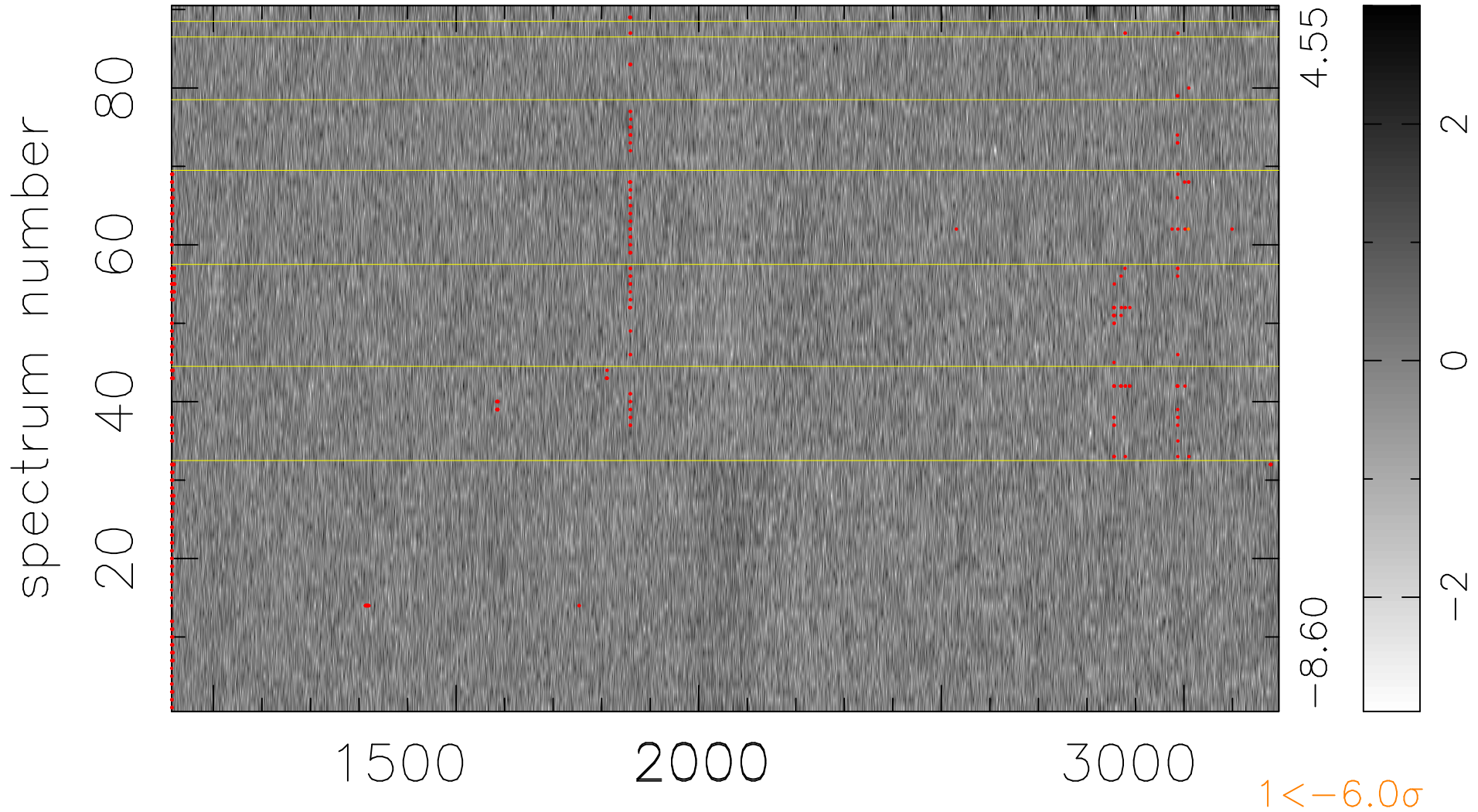


$$\chi(\lambda, t) = (\text{Data} - \text{Model } \text{AC}_5\text{B}_7\text{F}) / \sigma \chi$$

$$\chi^2 / (410760 - 5498) = 0.889 \Rightarrow 1.008$$

4564 × 90



bad:465=0.11% λ (Å) $z = 1.98345$