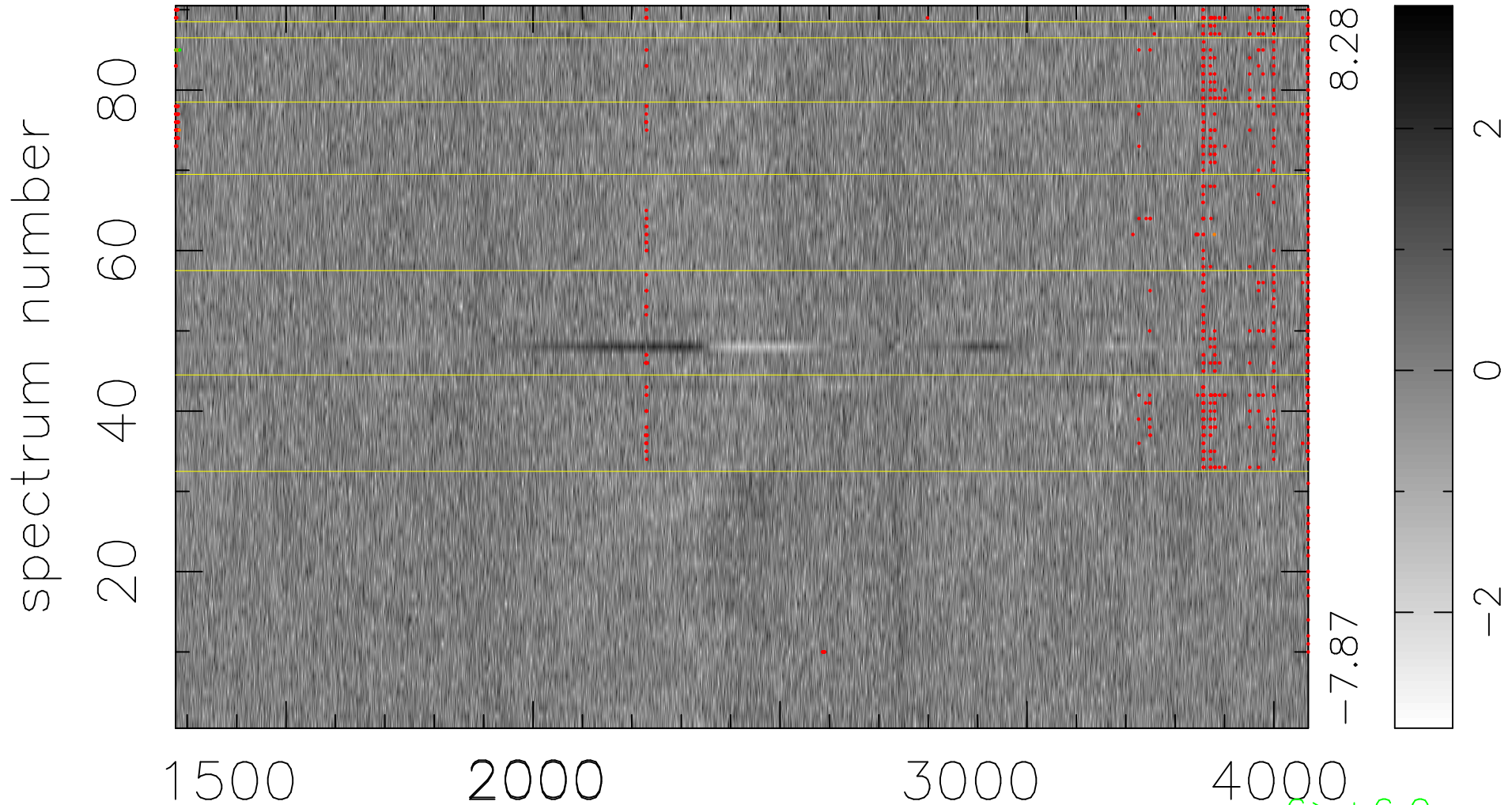


$$\chi(\lambda, t) = (\text{Data} - \text{Model } \text{AC}_5\text{B}_4\text{F}) / \sigma \chi$$

$$\chi^2 / (412830 - 5234) = 0.927 \Rightarrow 1.009$$

4587 × 90



bad:771=0.19%

λ (Å) $z = 1.51541$

6 > +6.0σ

7 < -6.0σ