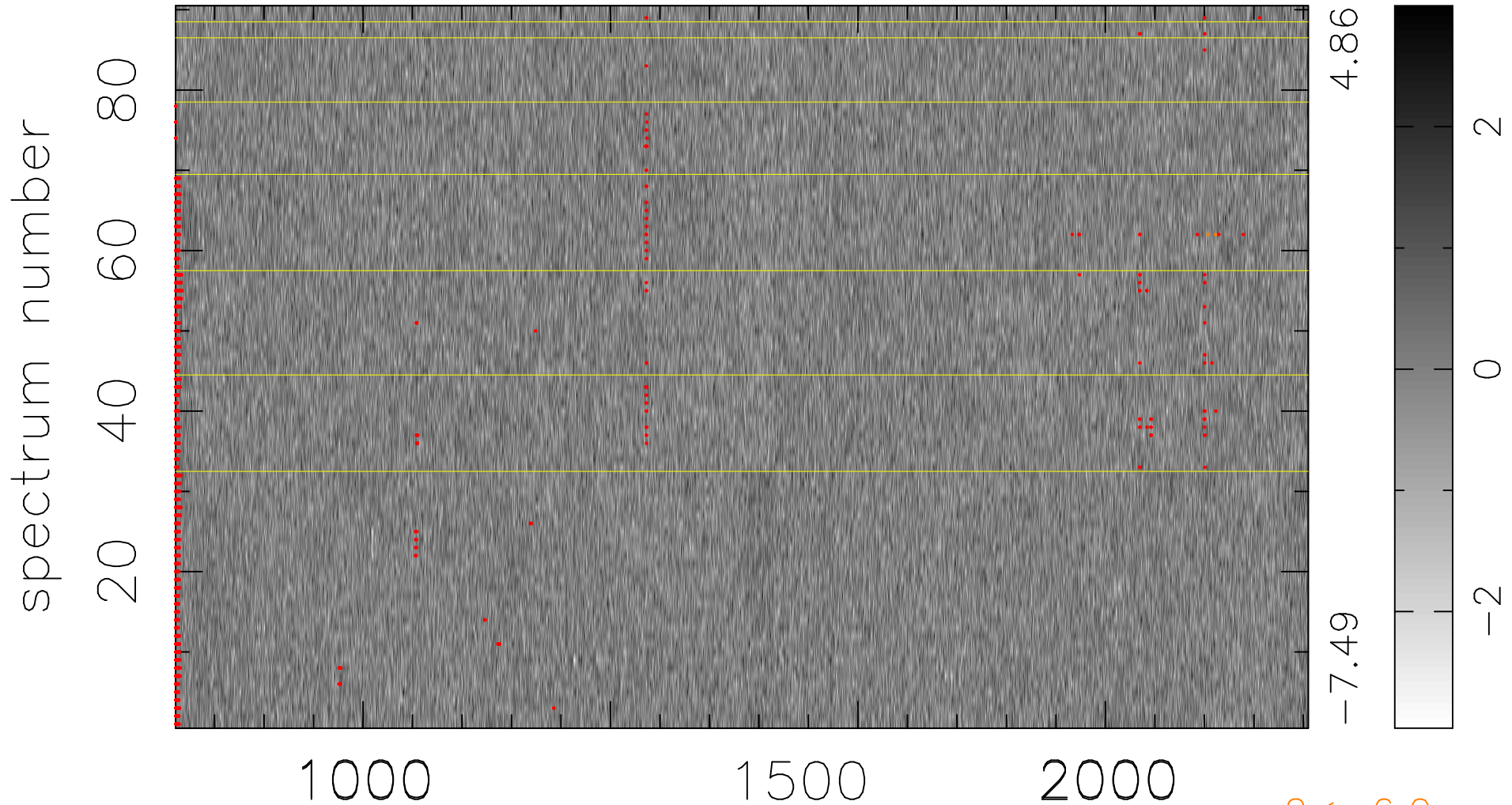


$$\chi(\lambda, t) = (\text{Data} - \text{Model } \text{AC}_5\text{B}_6\text{F}) / \sigma \chi$$

$$\chi^2 / (412020 - 5419) = 0.904 \Rightarrow 1.008$$

4578x90



$2 < -6.0\sigma$

bad:1282=0.31% λ (Å) $z = 3.28567$