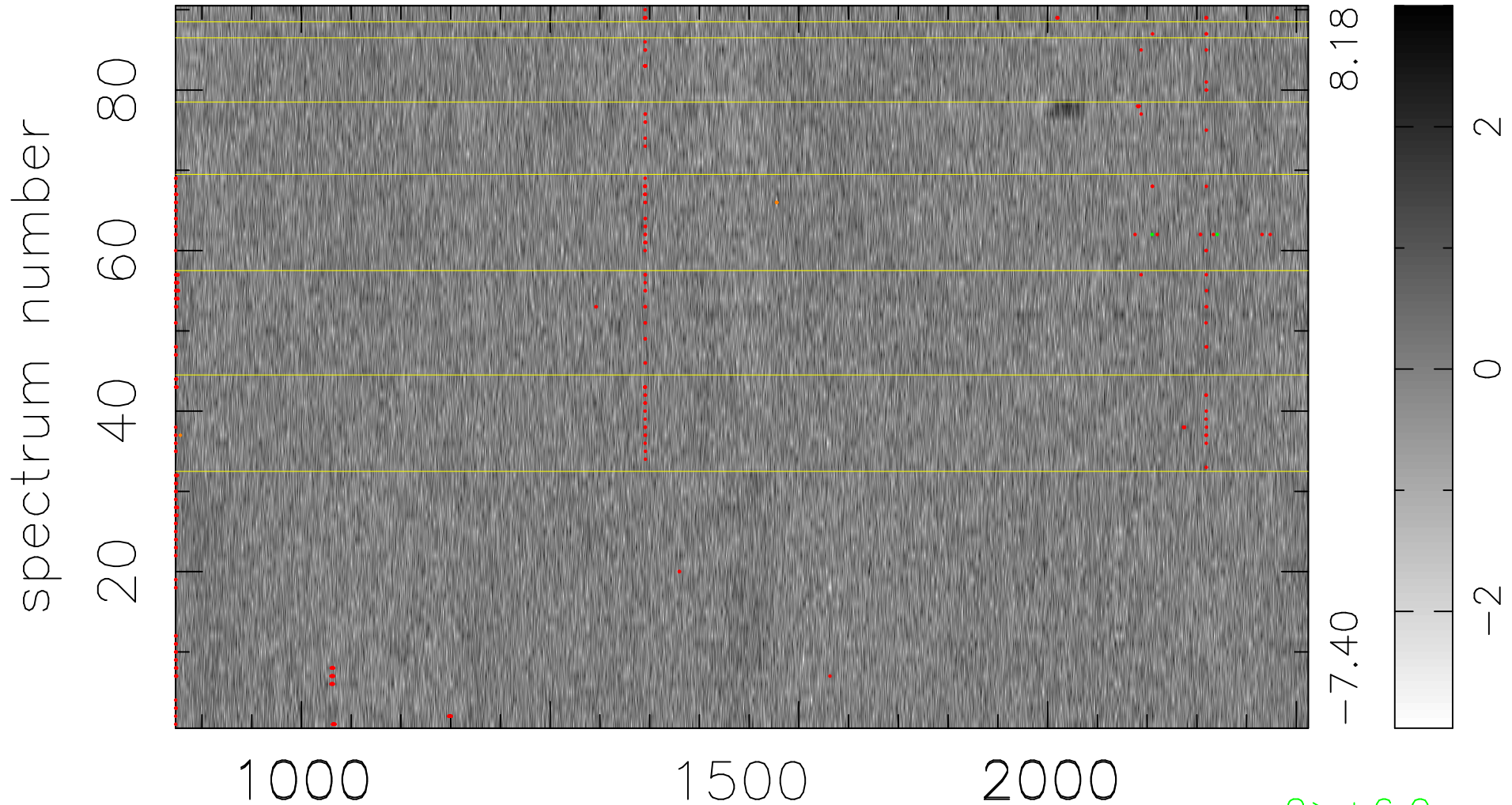


$$\chi(\lambda, t) = (\text{Data} - \text{Model } \text{AC}_5\text{B}_6\text{F}) / \sigma \chi$$

$$\chi^2 / (409950 - 5339) = 0.910 \Rightarrow 1.007$$

4555x90



bad:367=0.090% λ (Å) $z = 3.05787$

2 > +6.0 σ

4 < -6.0 σ