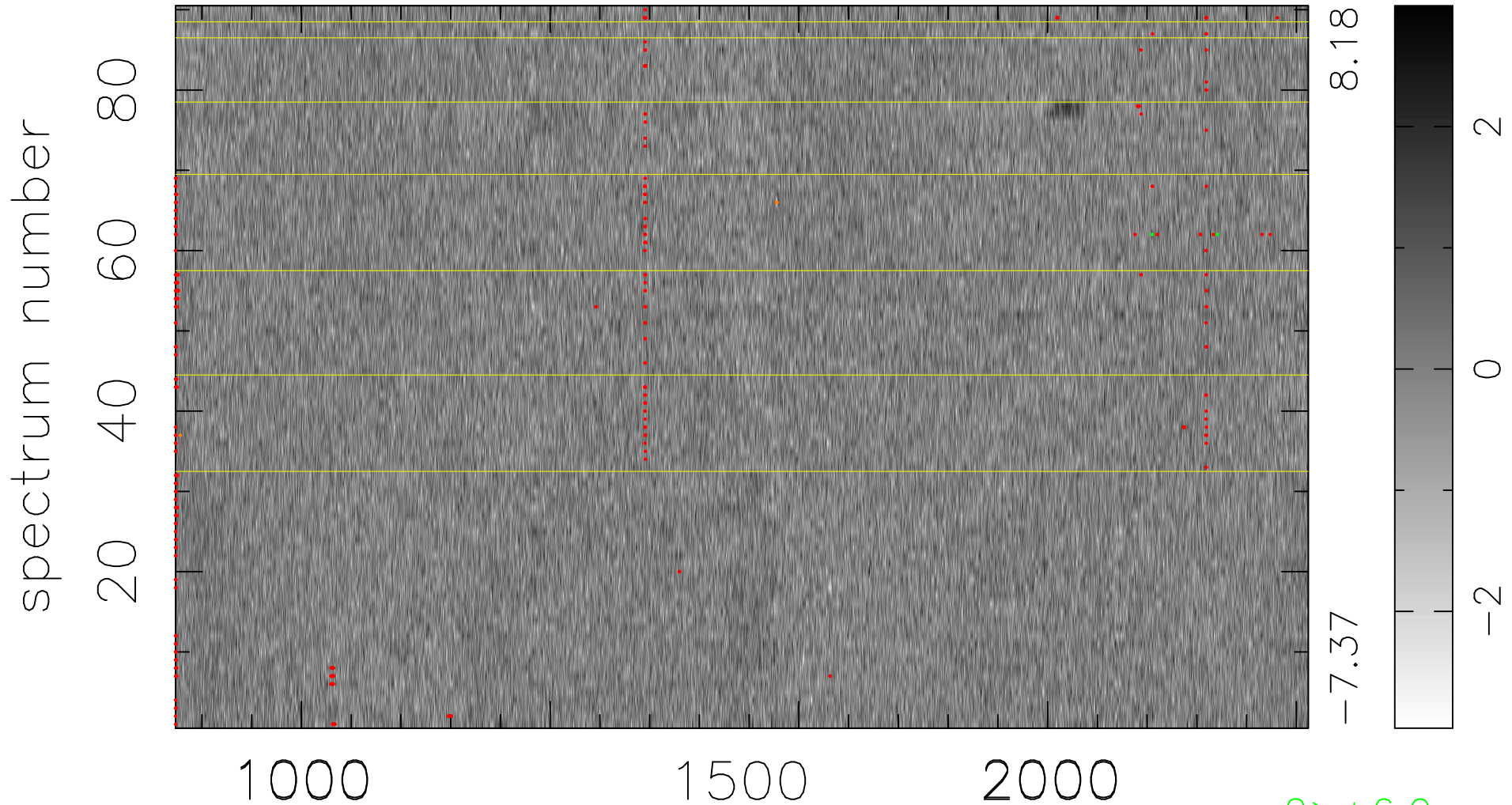


$$\chi(\lambda, t) = (\text{Data} - \text{Model AC}_5\text{F}) / \sigma \chi$$

$$\chi^2 / (409950 - 5221) = 0.913 \Rightarrow 1.006$$

4555x90



bad:367=0.090% λ (Å) $z = 3.05787$

2 > +6.0 σ

4 < -6.0 σ