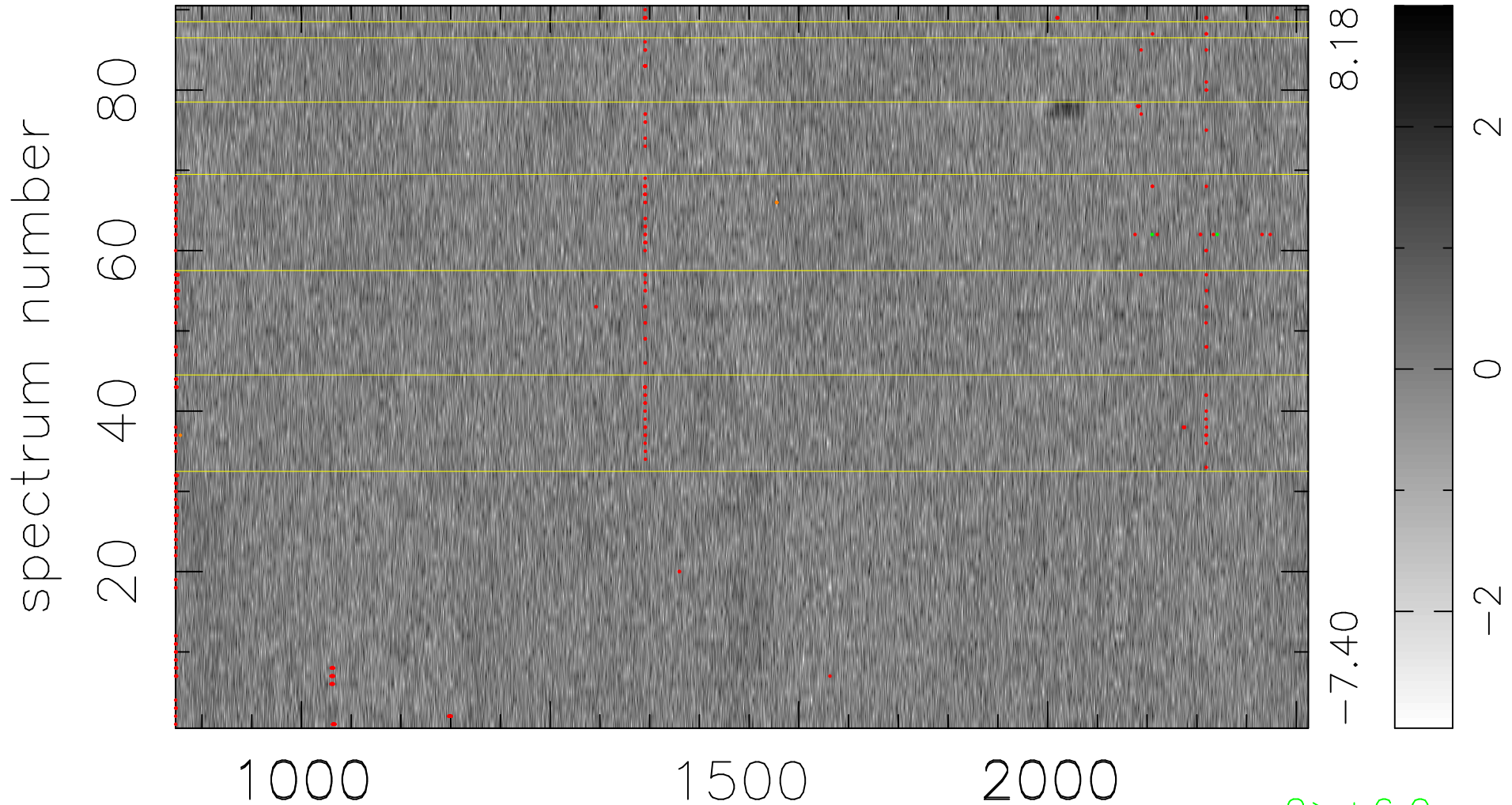


$$\chi(\lambda, t) = ( \text{Data} - \text{Model } \text{AC}_5\text{B}_6\text{F} ) / \sigma \chi$$

$$\chi^2 / (409950 - 5339) = 0.910 \Rightarrow 1.007$$

4555x90



bad:367=0.090%  $\lambda$  (Å)  $z = 3.05787$

2 > +6.0 $\sigma$

4 < -6.0 $\sigma$