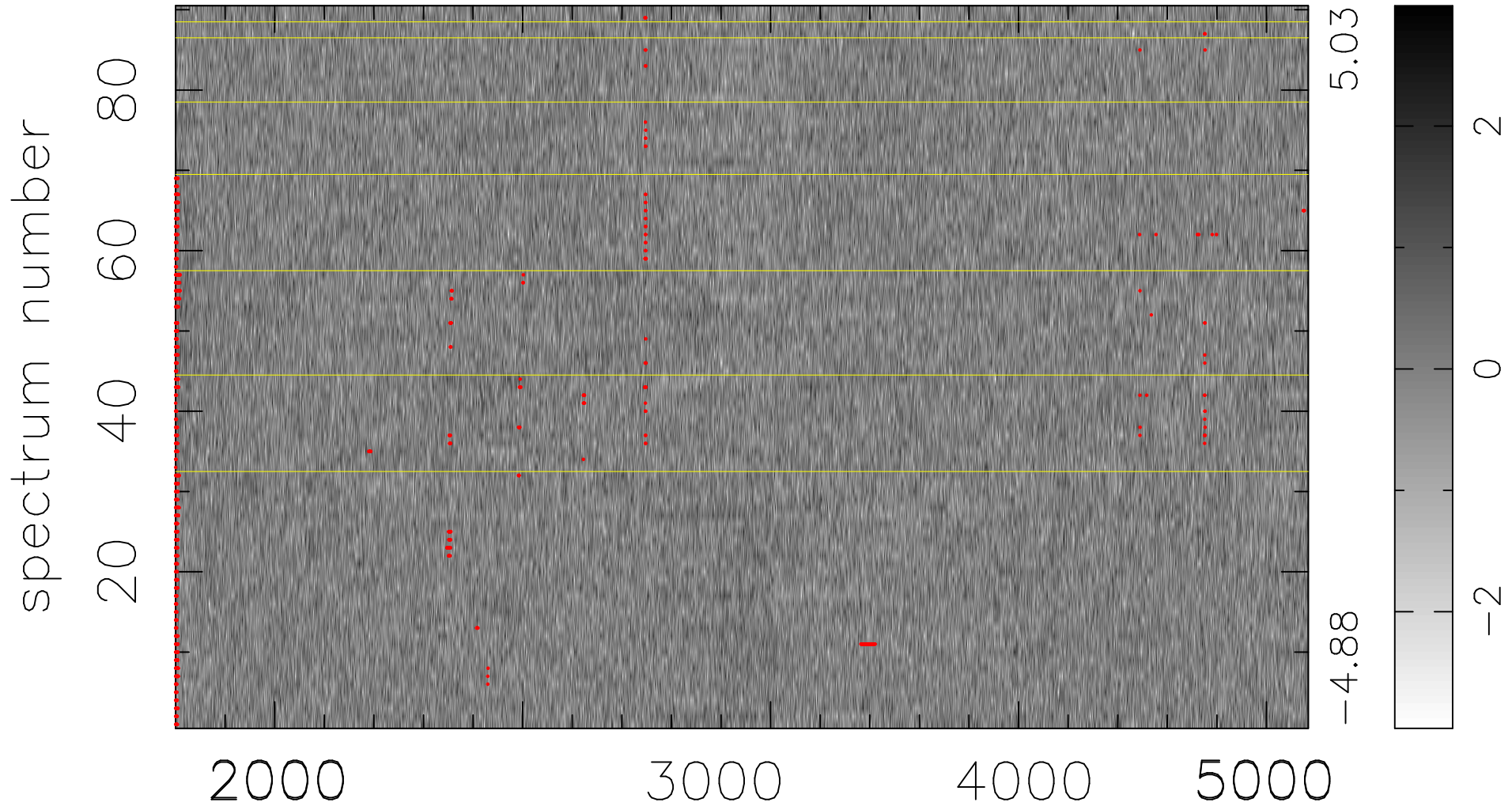


$$\chi(\lambda, t) = (\text{Data} - \text{Model } \text{AC}_5\text{B}_4\text{F}) / \sigma \chi$$

$$\chi^2 / (411210 - 5240) = 0.912 \Rightarrow 1.006$$

4569 × 90



bad:875=0.21% λ (Å) $z = 0.98138$