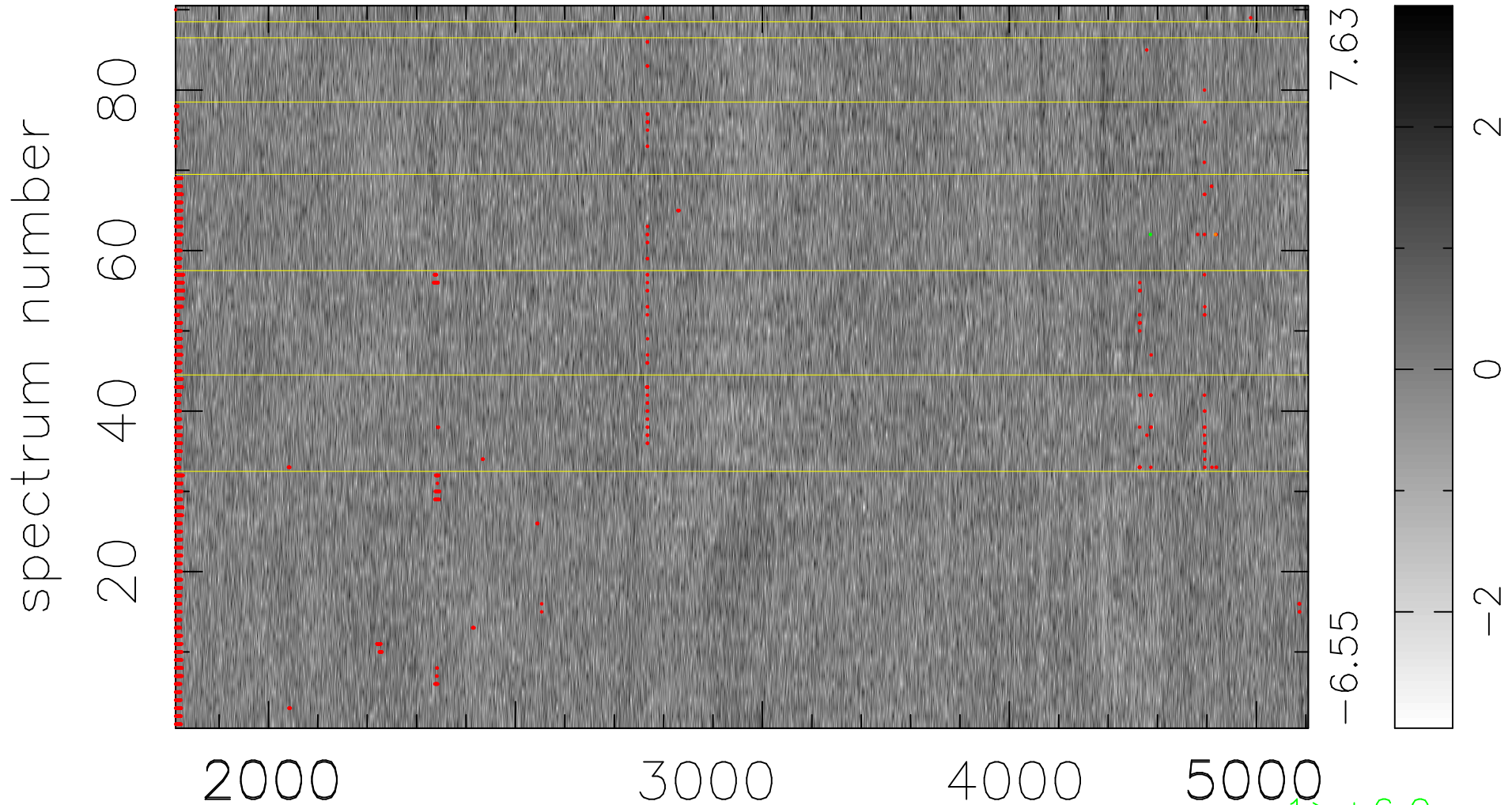


$$\chi(\lambda, t) = (\text{Data} - \text{Model } \text{AC}_5\text{B}_4\text{F}) / \sigma \chi$$

$$\chi^2 / (412830 - 5238) = 0.884 \Rightarrow 1.008$$

4587 × 90



bad:1964=0.48% λ (Å) $z = 0.96376$

$1 > +6.0\sigma$

$1 < -6.0\sigma$