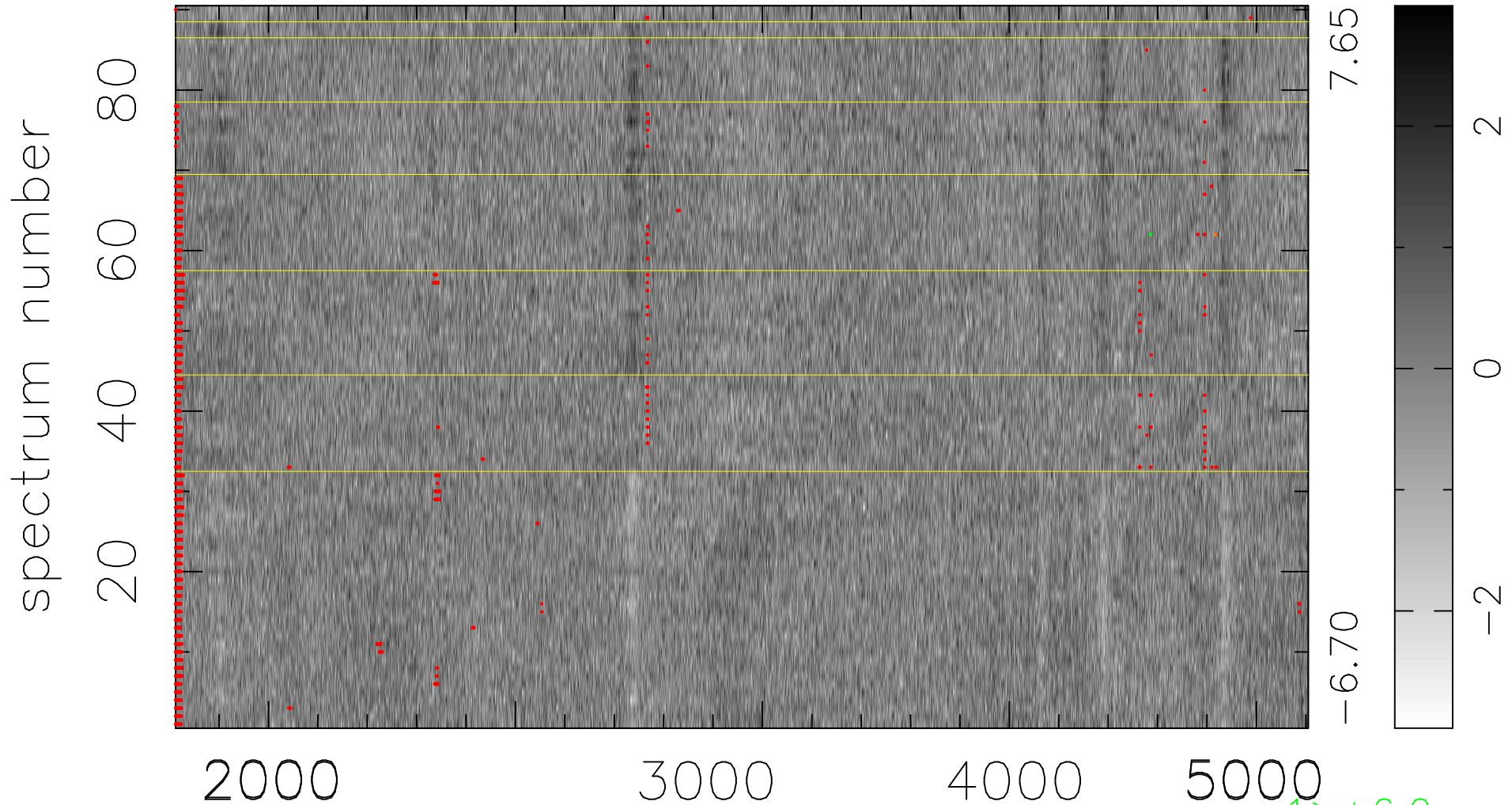


$$\chi(\lambda, t) = (\text{Data} - \text{Model AC}_5\text{F}) / \sigma \chi$$

$$\chi^2 / (412830 - 5071) = 0.900 \Rightarrow 1.008$$

4587x90



bad:1964=0.48% λ (Å) $z = 0.96376$

$1 > +6.0\sigma$

$1 < -6.0\sigma$