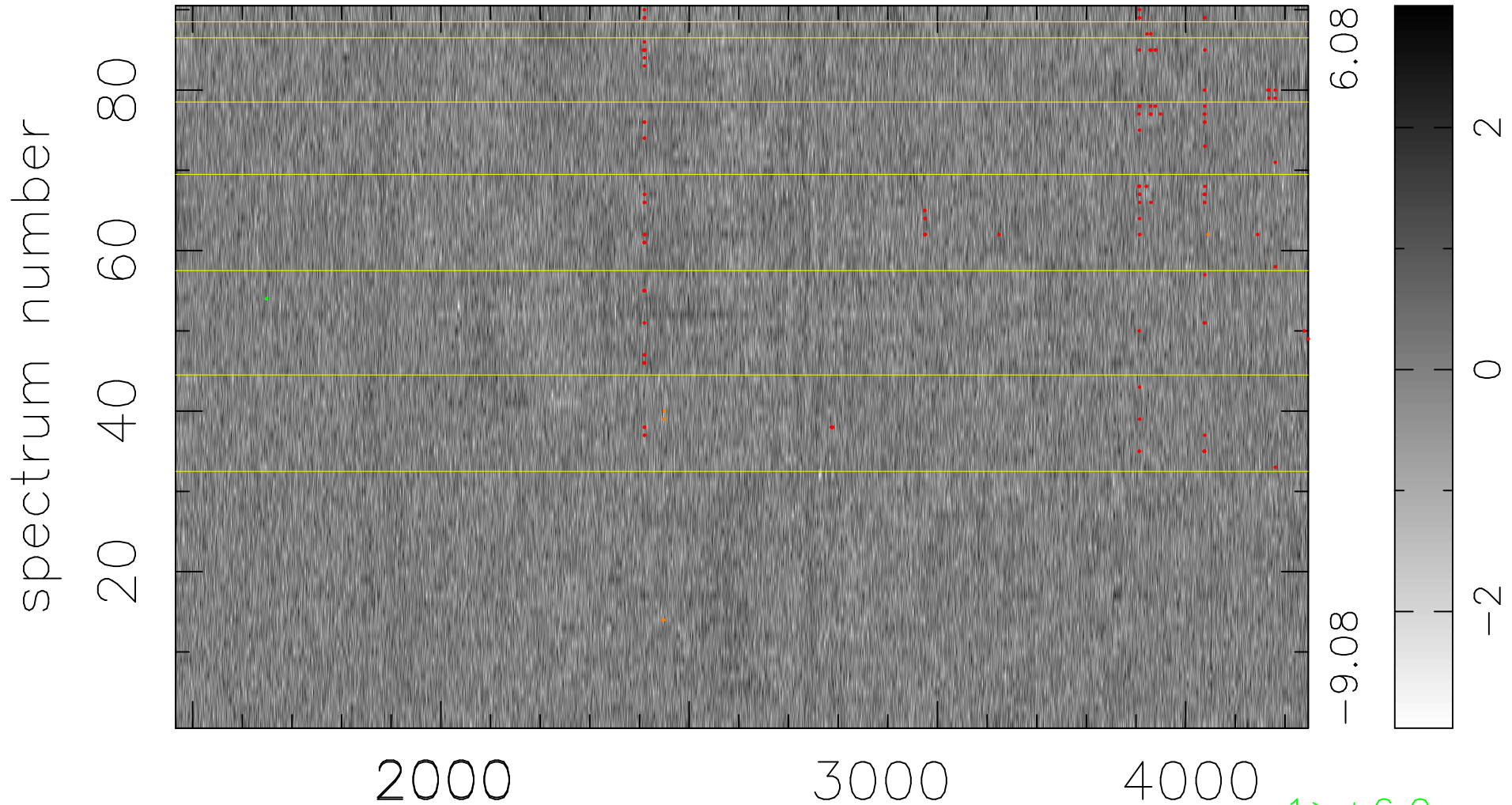


$$\chi(\lambda, t) = (\text{Data} - \text{Model } \text{AC}_5\text{B}_3\text{F}) / \sigma \chi$$

$$\chi^2 / (410670 - 5116) = 0.916 \Rightarrow 1.008$$

4563x90



bad:125=0.030% λ (Å) $z = 1.31497$

1 > +6.0 σ

6 < -6.0 σ