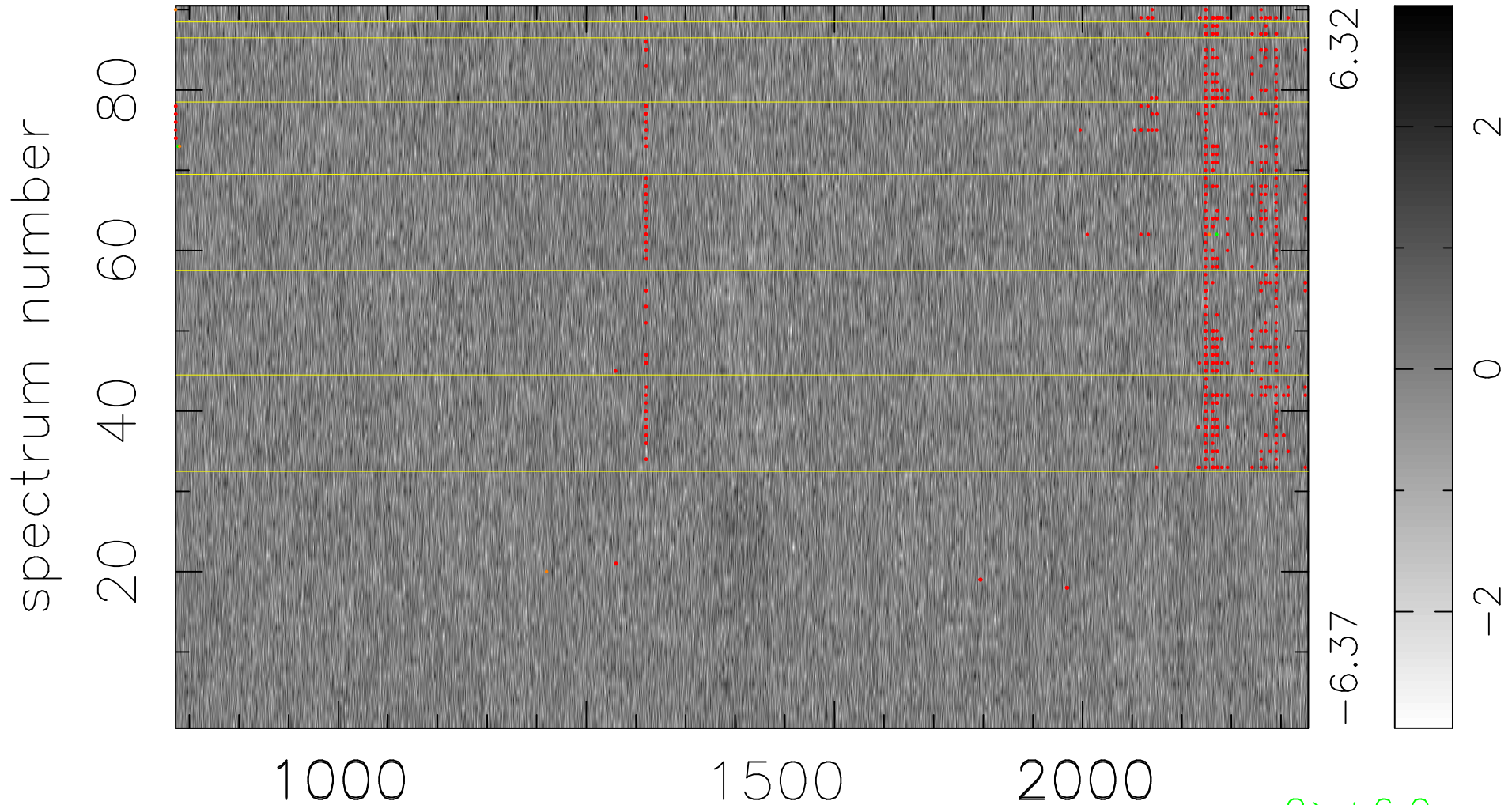


$$\chi(\lambda, t) = ( \text{Data} - \text{Model } \text{AC}_5\text{B}_6\text{F} ) / \sigma \chi$$

$$\chi^2 / (410940 - 5398) = 0.896 \Rightarrow 1.006$$

4566 × 90



bad:609=0.15%

$\lambda$  (Å)  $z = 3.19221$

2 > +6.0σ

4 < -6.0σ