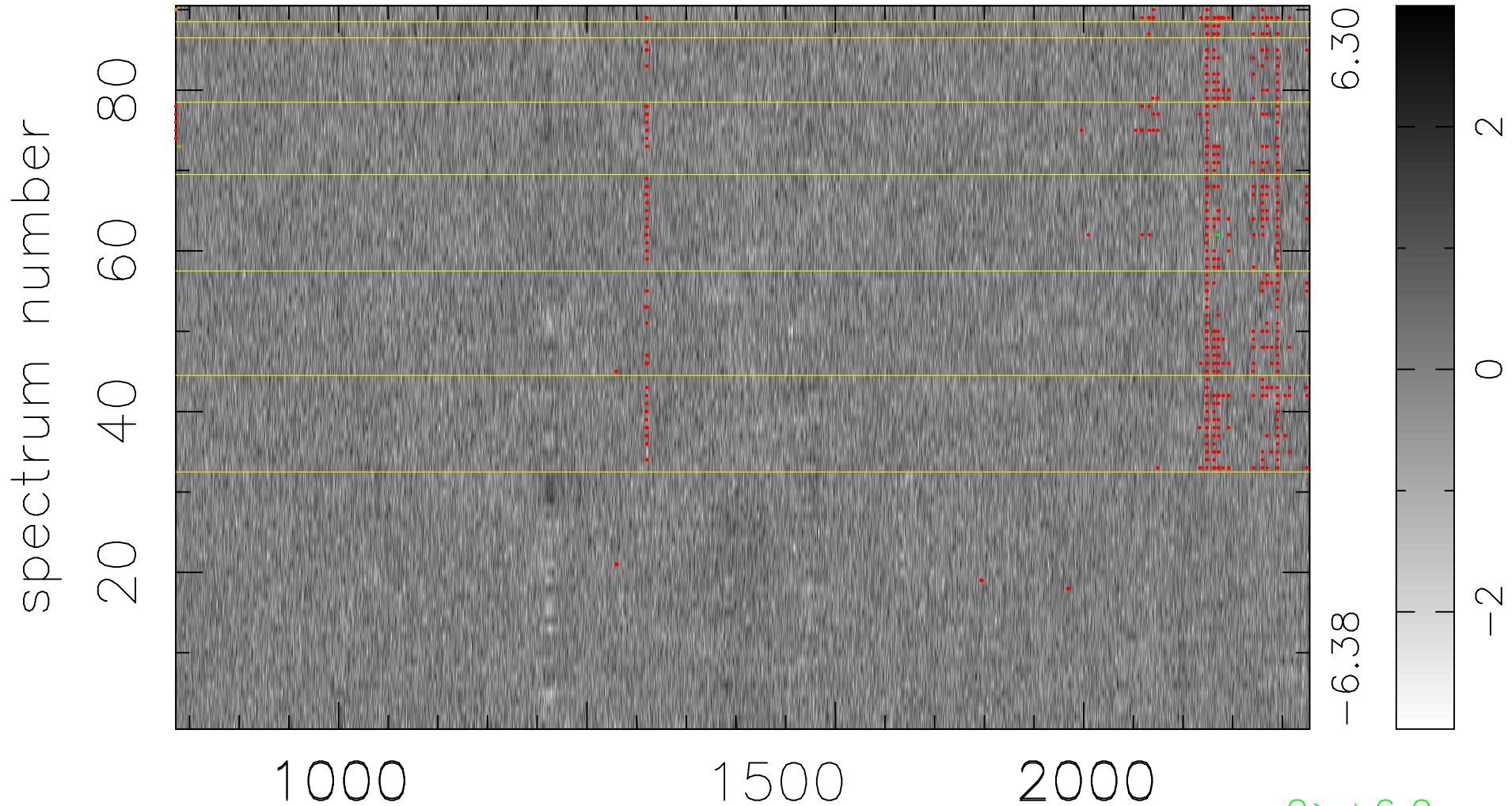


$$\chi(\lambda,t) = ( \text{Data} - \text{Model } AC_5 ) / \sigma \chi$$

$$\chi^2 / (410940 - 5152) = 0.903 \Rightarrow 1.007$$

4566x90



bad:609=0.15%

$\lambda$  (Å)  $z = 3.19221$

2 > +6.0σ

3 < -6.0σ