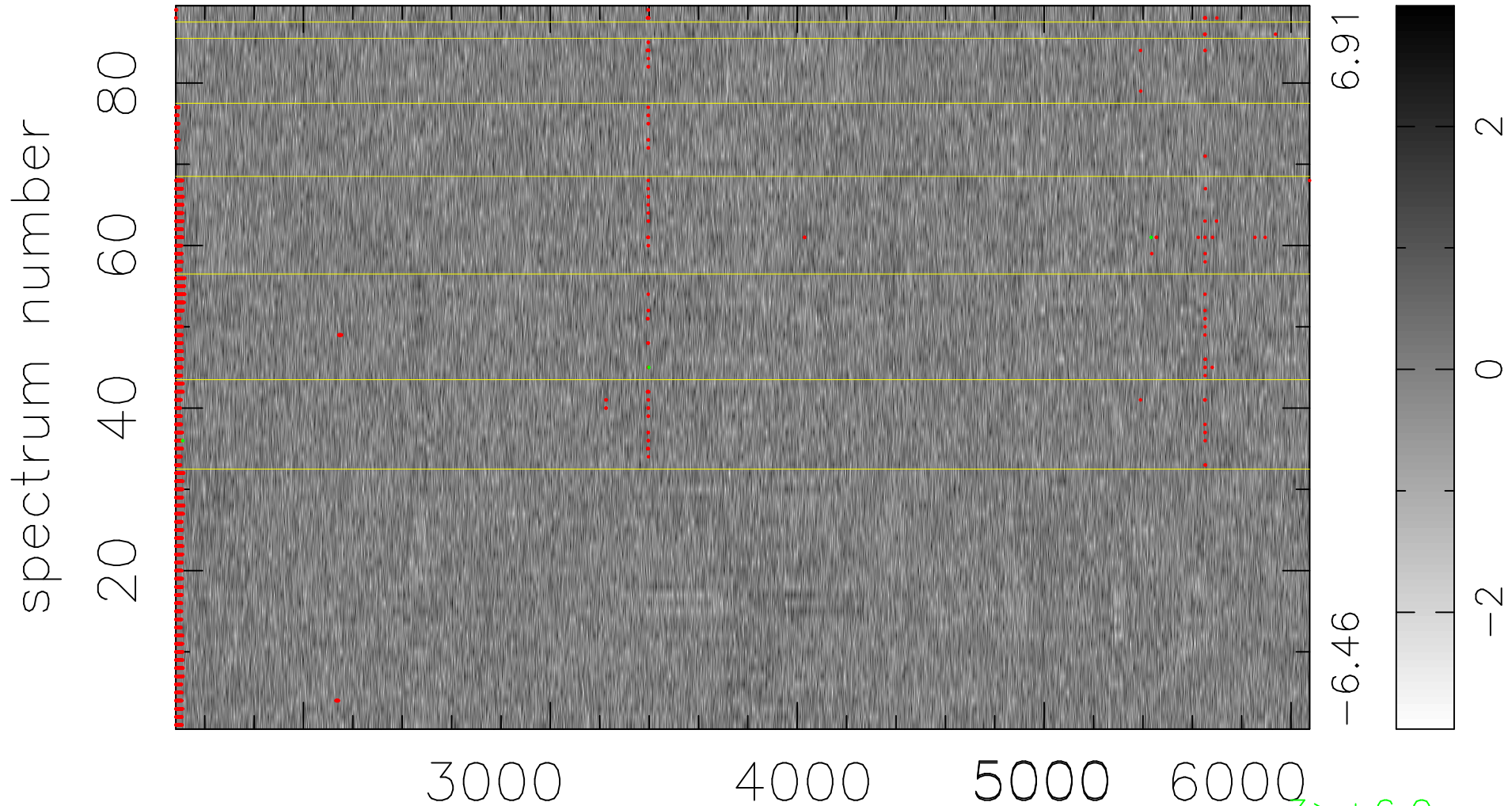


$$\chi(\lambda,t) = (\text{Data} - \text{Model } AC_5) / \sigma \chi$$

$$\chi^2 / (408777 - 4873) = 0.899 \Rightarrow 1.007$$

4593x89



bad:2052=0.50% λ (Å) $z = 0.61025$

3 > +6.0σ

1 < -6.0σ