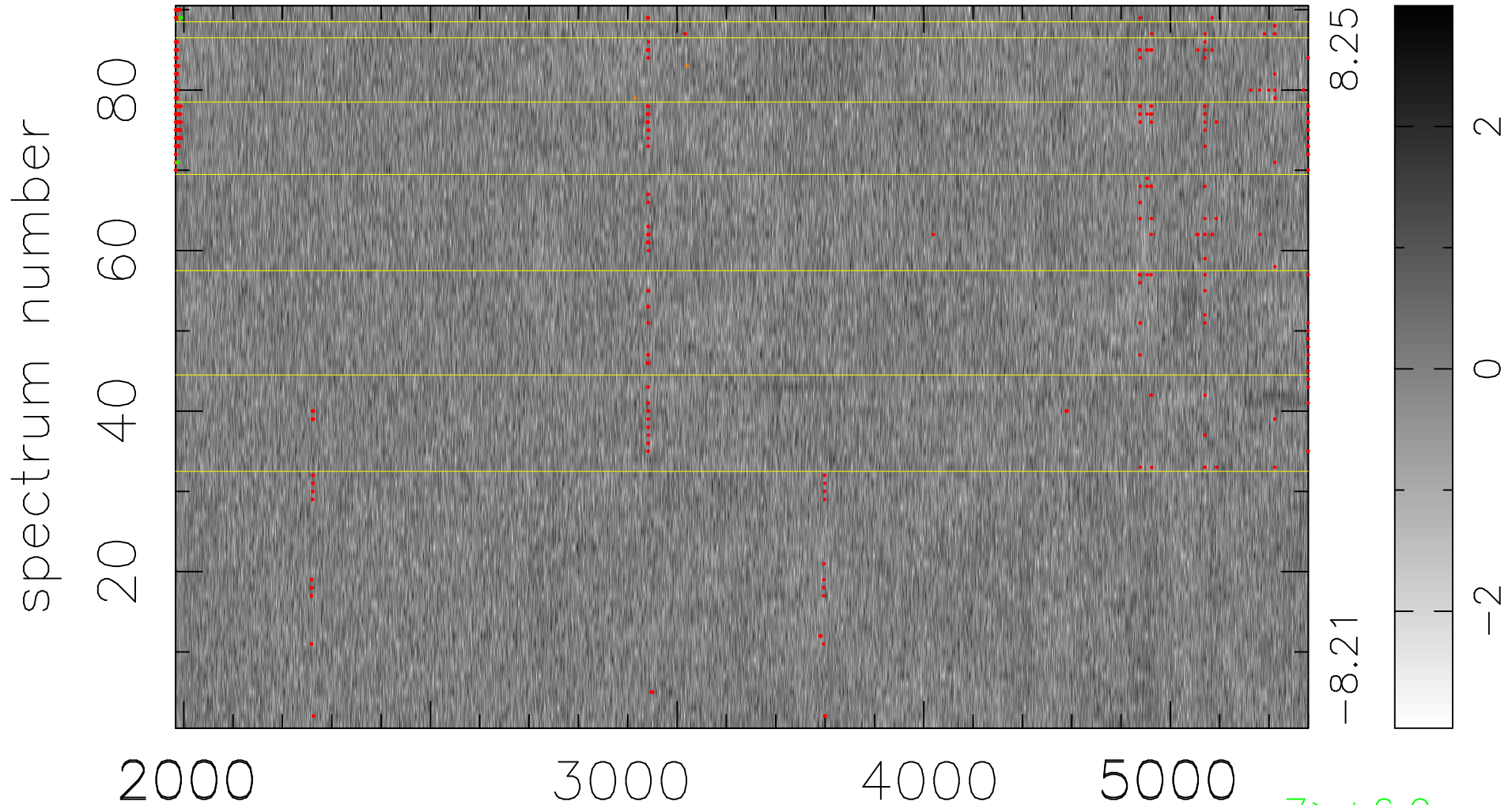


$$\chi(\lambda, t) = (\text{Data} - \text{Model AC}_5\text{F}) / \sigma \chi$$

$$\chi^2 / (413370 - 4968) = 0.950 \Rightarrow 1.006$$

4593x90



bad:519=0.13%

λ (Å) $z = 0.81224$

7 > +6.0σ

9 < -6.0σ