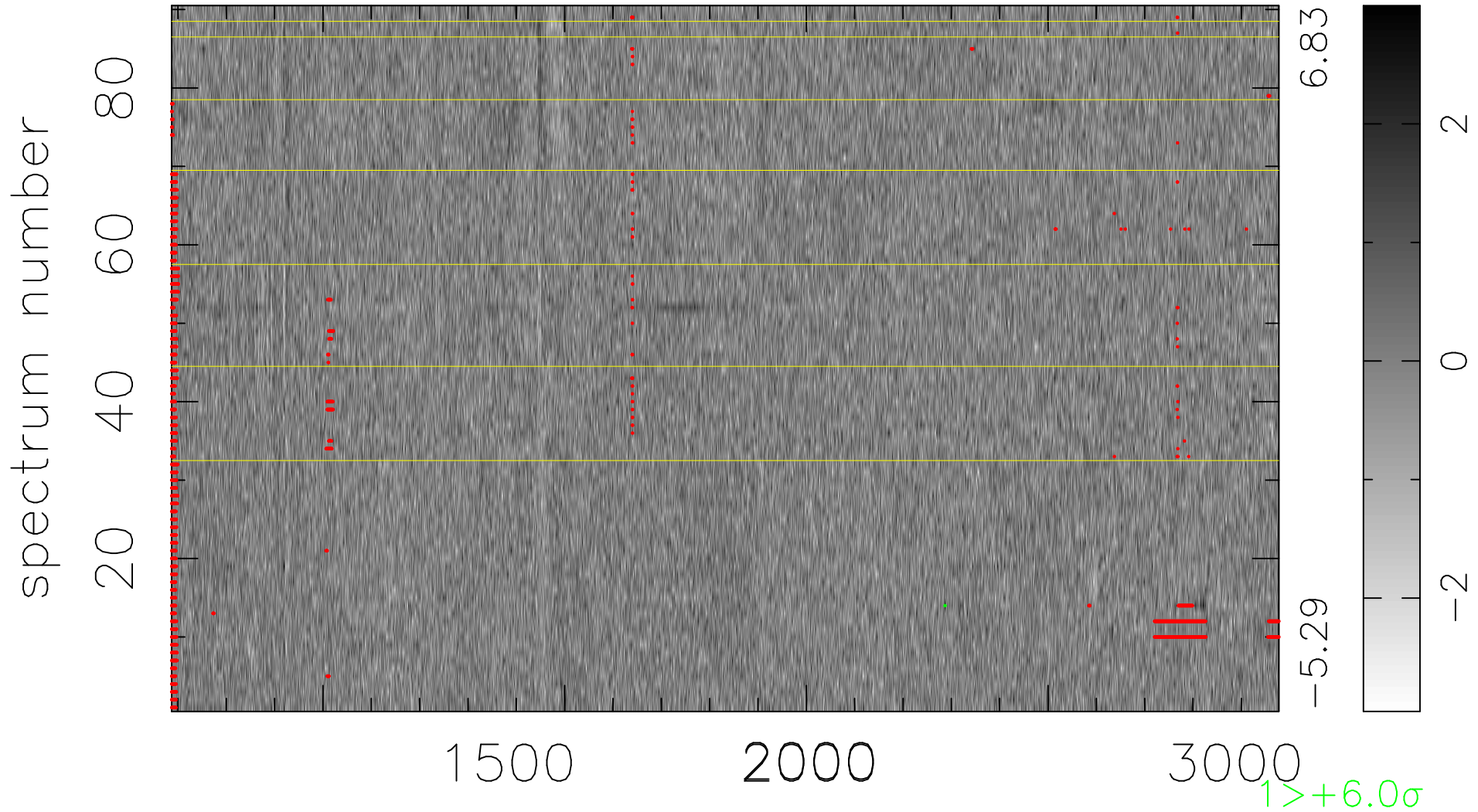


$$\chi(\lambda, t) = ( \text{Data} - \text{Model } \text{AC}_5\text{B}_7\text{F} ) / \sigma \chi$$

$$\chi^2 / (412380 - 5540) = 0.903 \Rightarrow 1.008$$

4582 × 90



bad:2245=0.54%  $\lambda$  (Å)  $z = 2.29990$