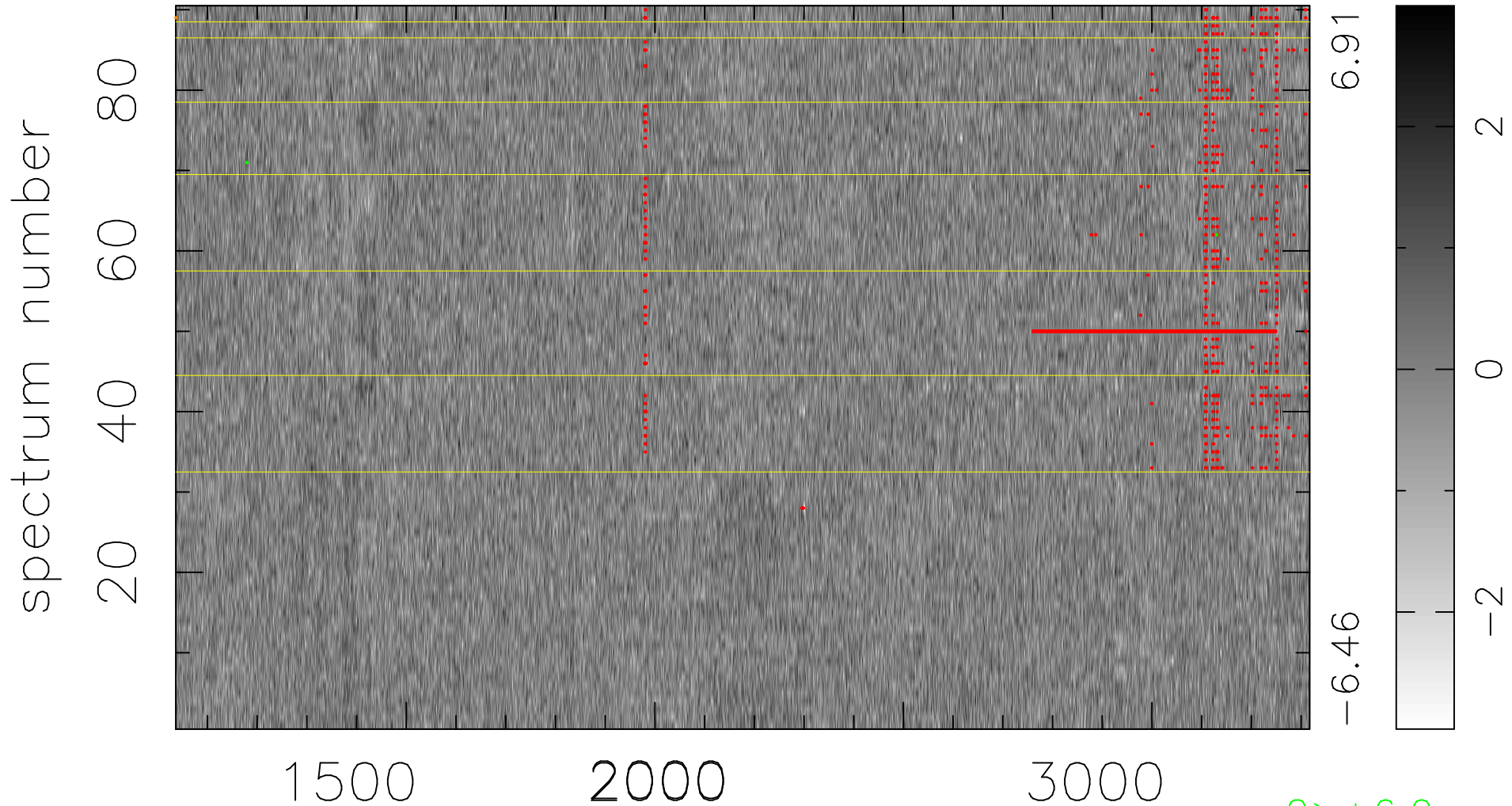


$$\chi(\lambda, t) = ( \text{Data} - \text{Model } \text{AC}_5\text{B}_5\text{F} ) / \sigma \chi$$

$$\chi^2 / (410670 - 5320) = 0.900 \Rightarrow 1.008$$

4563x90



bad:1592=0.39%  $\lambda$  (Å)  $z = 1.82072$

2 > +6.0 $\sigma$   
1 < -6.0 $\sigma$