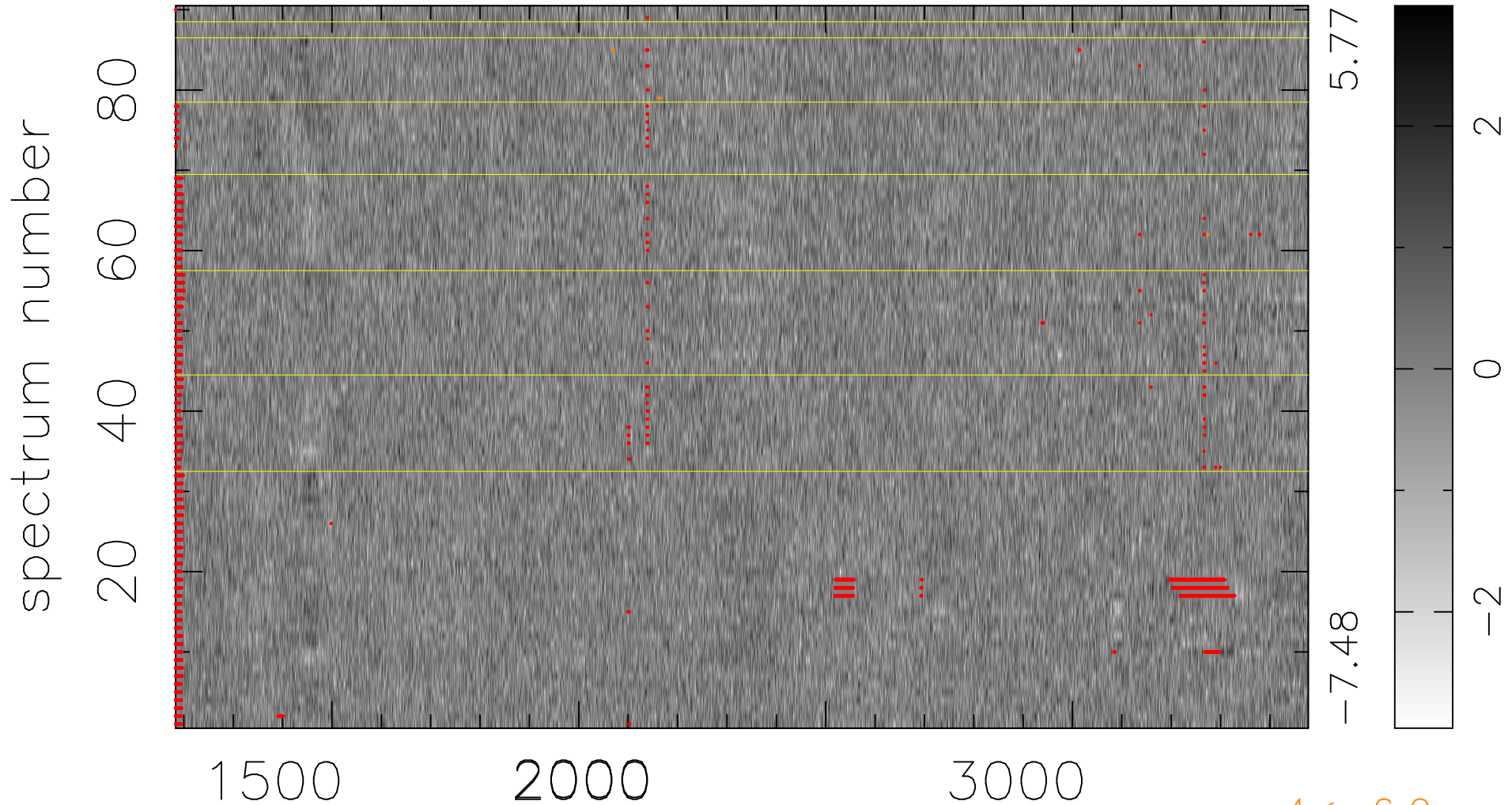


$$\chi(\lambda, t) = (\text{Data} - \text{Model AC}_5\text{F}) / \sigma \chi$$

$$\chi^2 / (413010 - 5161) = 0.909 \Rightarrow 1.007$$

4589x90



bad:2911=0.70% λ (Å) $z = 1.62248$

4 < -6.0 σ