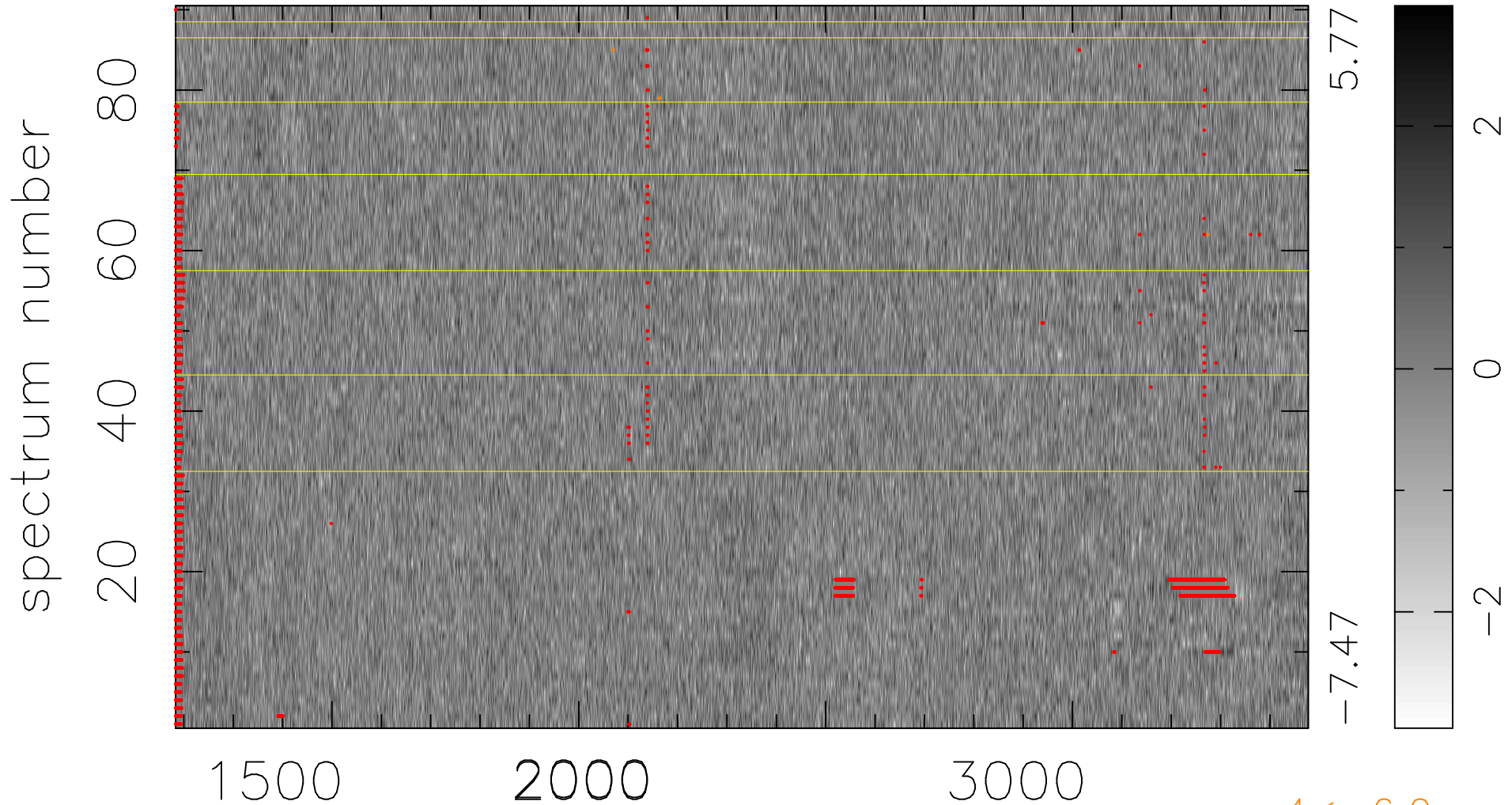


$$\chi(\lambda, t) = (\text{Data} - \text{Model } \text{AC}_5\text{B}_5\text{F}) / \sigma \chi$$

$$\chi^2 / (413010 - 5298) = 0.904 \Rightarrow 1.007$$

4589x90



bad:2911=0.70% λ (Å) $z = 1.62248$

$4 < -6.0\sigma$