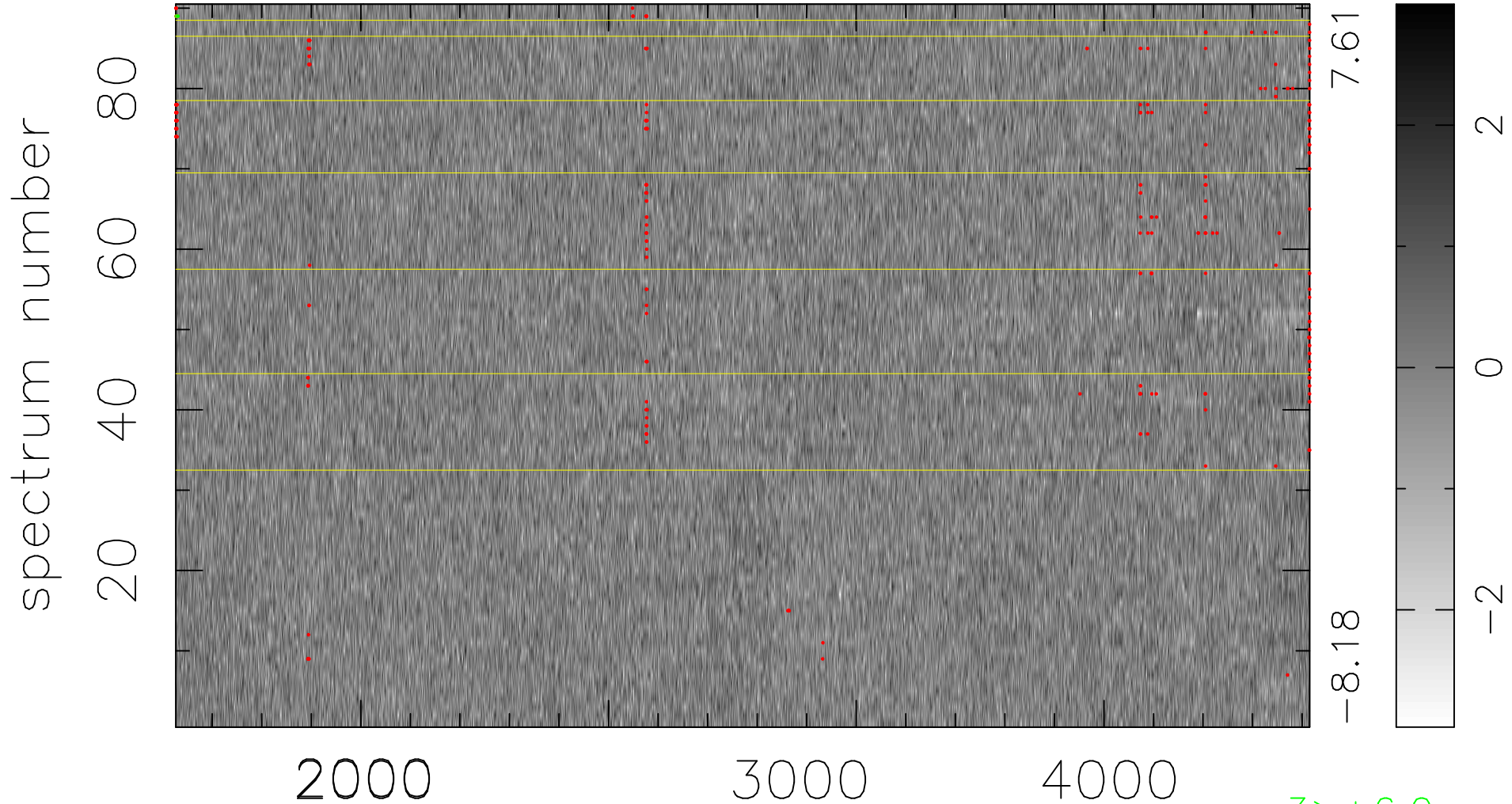


$$\chi(\lambda,t) = ( \text{Data} - \text{Model } AC_5 ) / \sigma \chi$$

$\chi^2 / (412020 - 4860) = 0.936 \Rightarrow 1.007$

4578x90



bad:289=0.070%  $\lambda$  (Å)  $z = 1.14381$

3 > +6.0σ

3 < -6.0σ