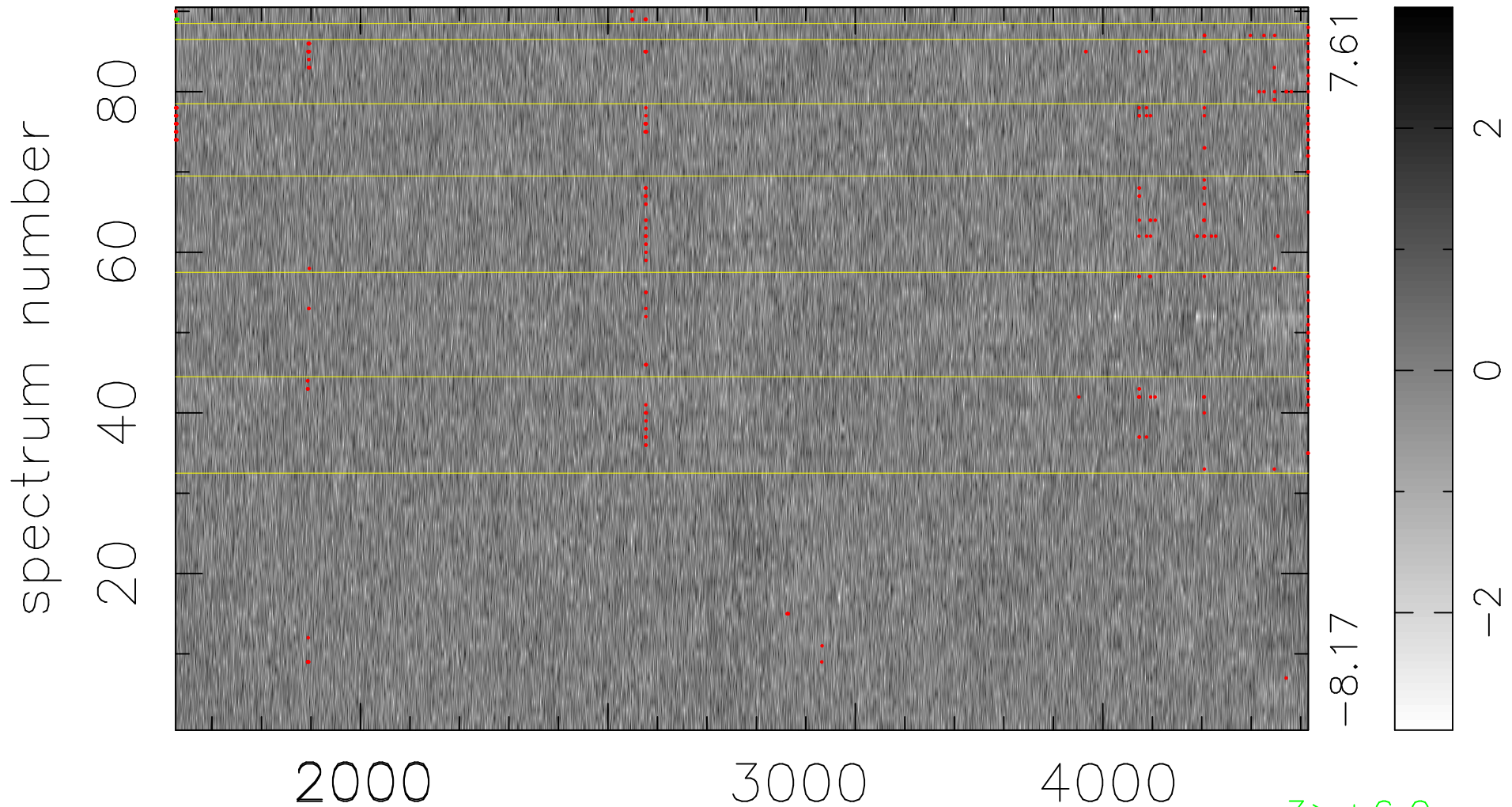


$$\chi(\lambda, t) = (\text{Data} - \text{Model } \text{AC}_5\text{B}_3\text{F}) / \sigma \chi$$

$$\chi^2 / (412020 - 5095) = 0.936 \Rightarrow 1.007$$

4578x90



bad:289=0.070% λ (Å) $z = 1.14381$

3 > +6.0 σ

3 < -6.0 σ