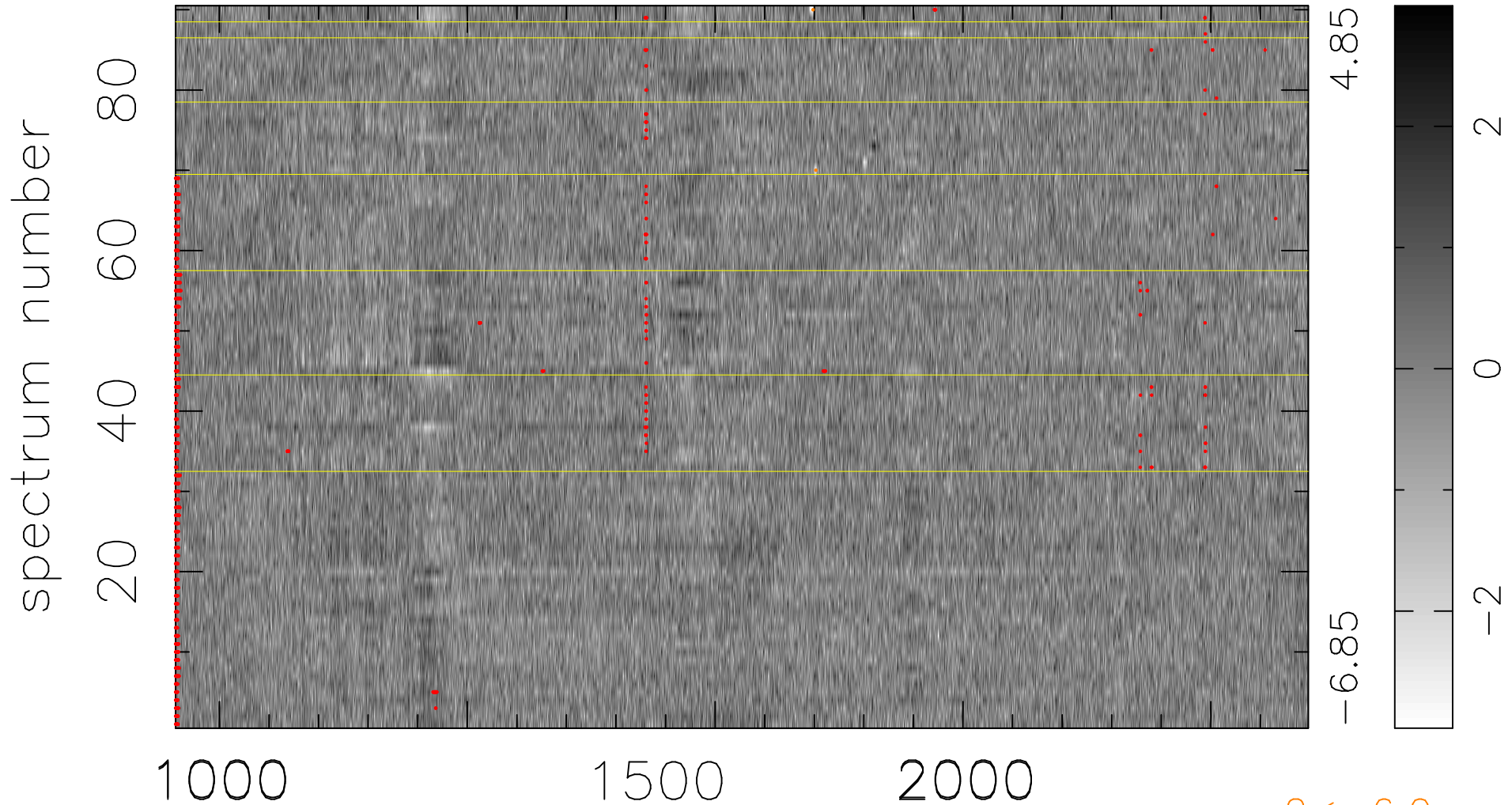


$$\chi(\lambda, t) = (\text{Data} - \text{Model AC}_5\text{F}) / \sigma \chi$$

$$\chi^2 / (411390 - 5233) = 0.923 \Rightarrow 1.007$$

4571 × 90



bad:992=0.24%

λ (Å) $z = 2.75305$

$2 < -6.0\sigma$