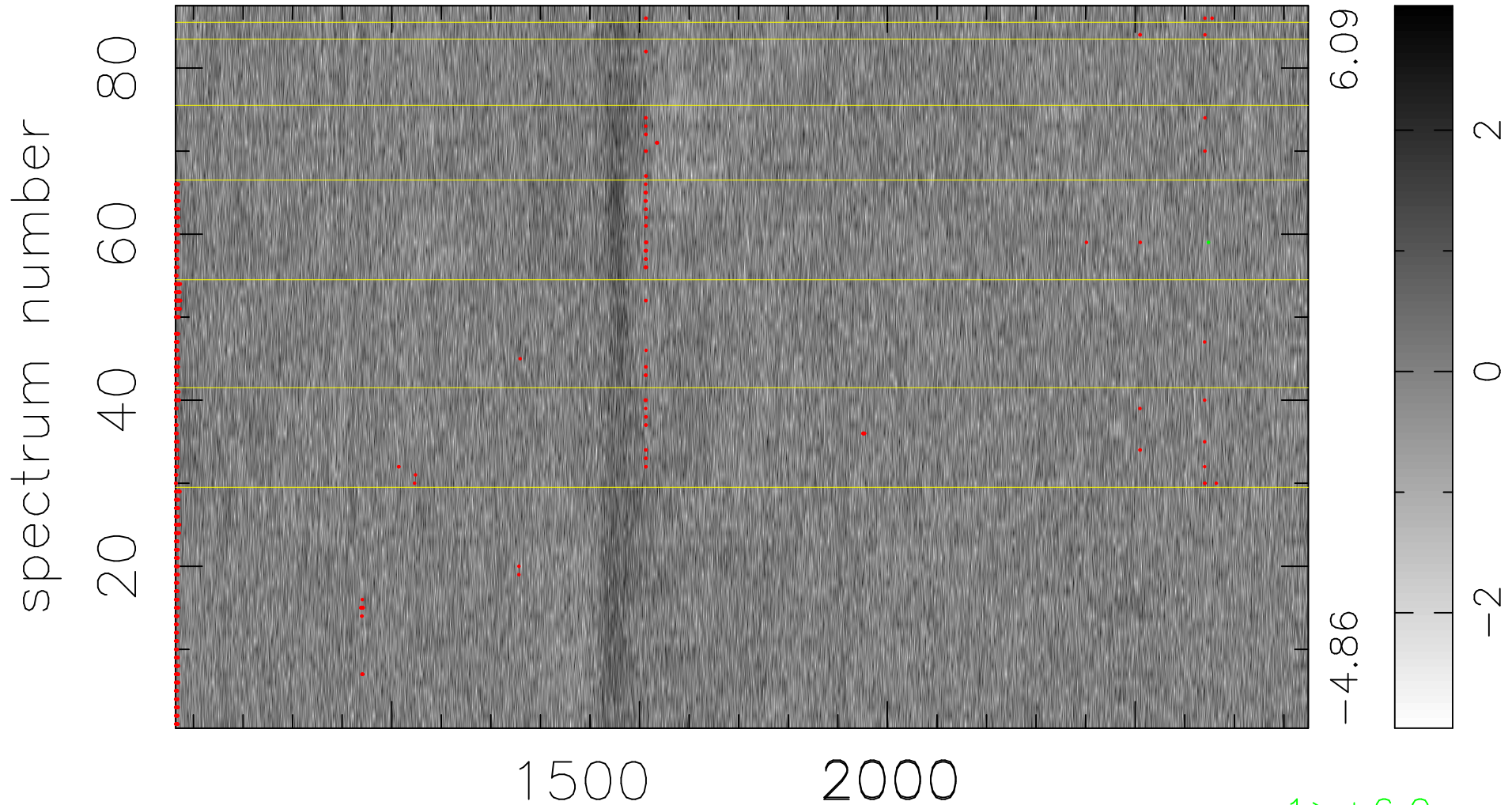


$$\chi(\lambda, t) = ( \text{Data} - \text{Model } \text{AC}_5\text{B}_7\text{F} ) / \sigma \chi$$

$$\chi^2 / (397677 - 5460) = 0.935 \Rightarrow 1.013$$

4571 × 87



bad:832=0.21%

$\lambda$  (Å)  $z = 2.49941$

1 > +6.0 $\sigma$