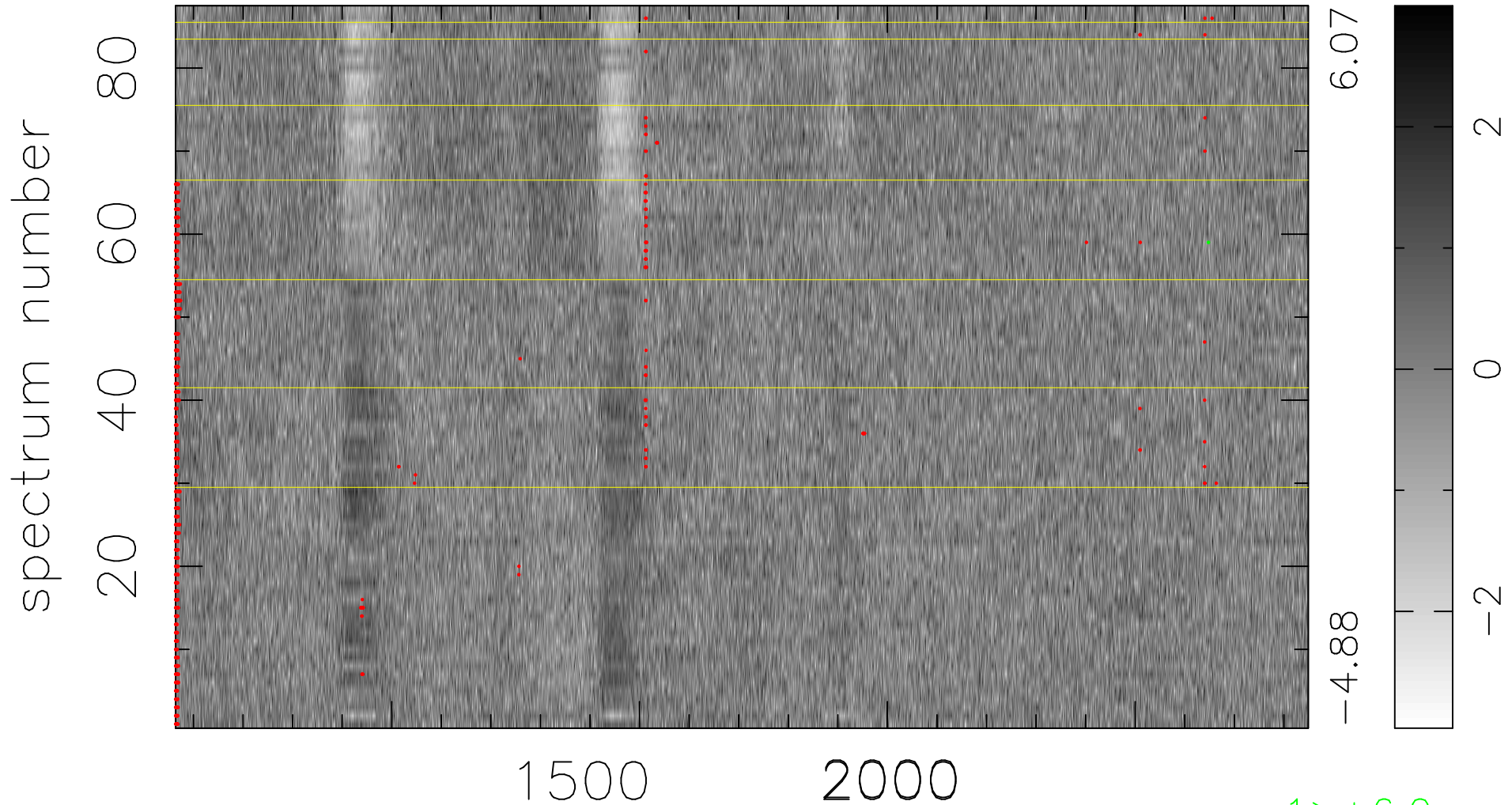


$$\chi(\lambda, t) = (\text{Data} - \text{Model AC}_5\text{F}) / \sigma \chi$$

$$\chi^2 / (397677 - 5303) = 1.008 \Rightarrow 1.008$$

4571 × 87



6.07

-4.88

2

0

-2

1 > +6.0σ

bad:832=0.21%

λ (Å) z = 2.49941