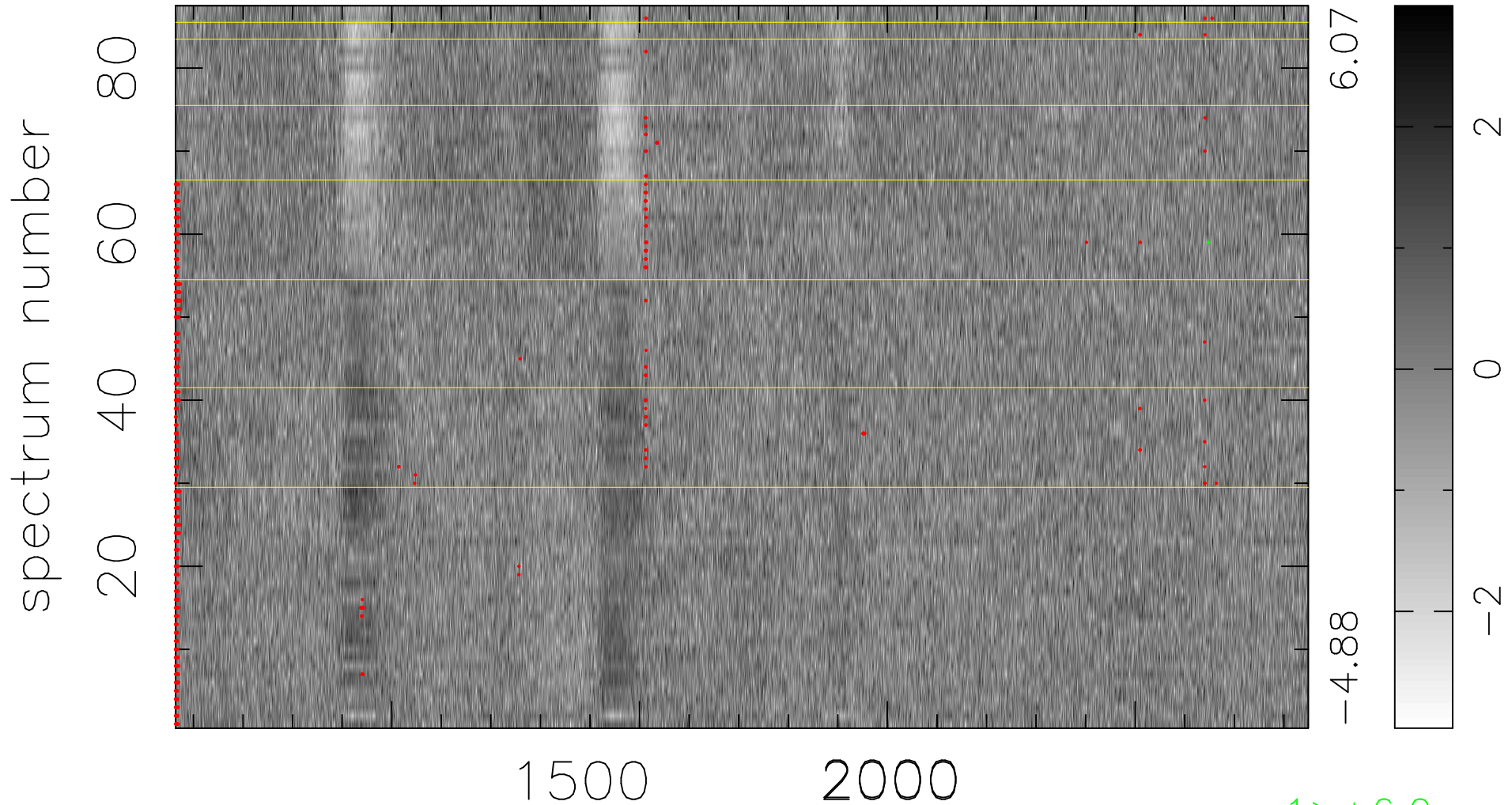


$$\chi(\lambda,t) = ( \text{Data} - \text{Model AC}_5 ) / \sigma \chi$$

$$\chi^2 / ((397677 - 5216) = 1.008 \Rightarrow 1.008$$

4571x87



bad:832=0.21%

$\lambda$  (Å)  $z = 2.49941$

1 > +6.0σ