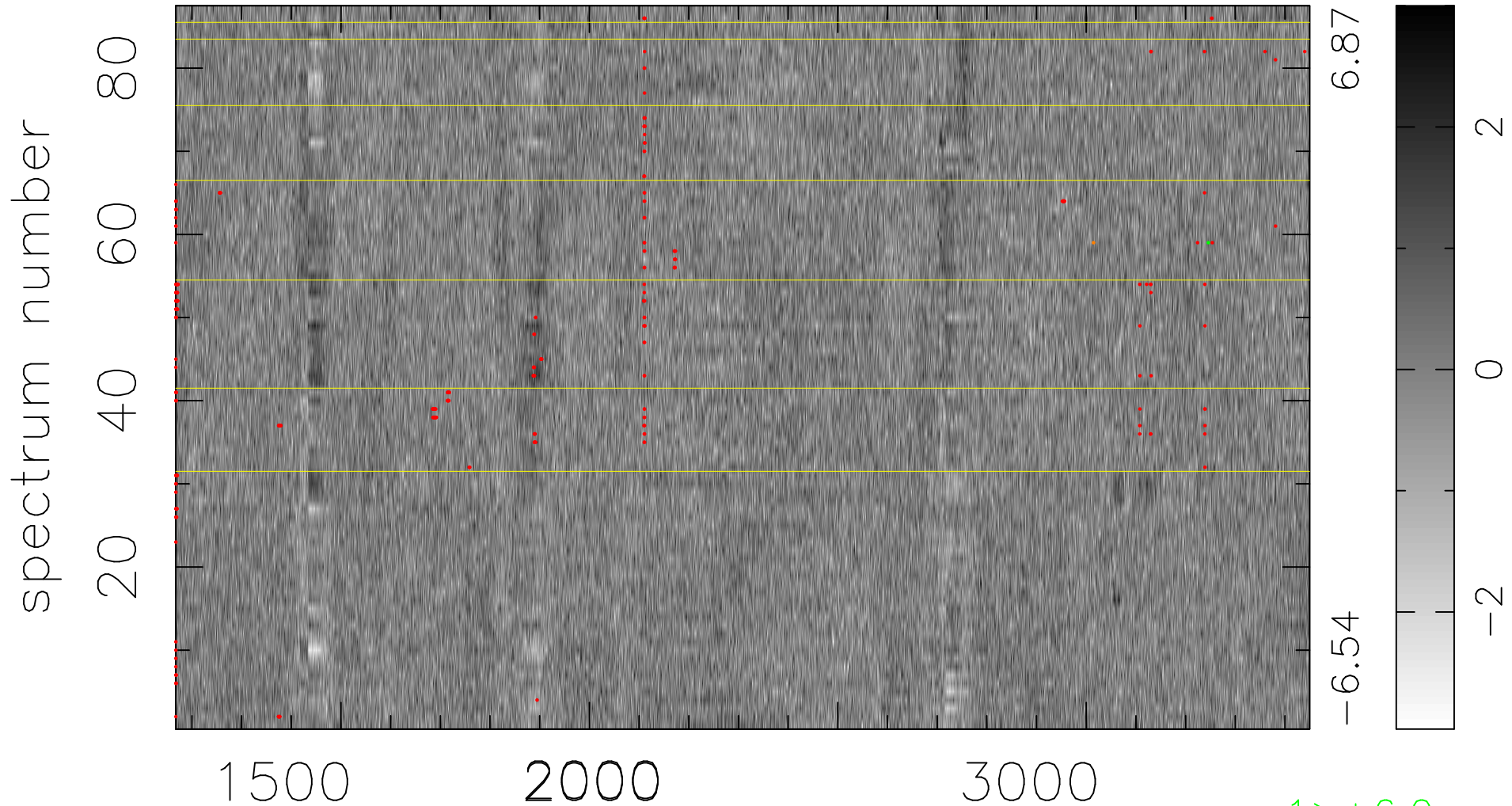


$$\chi(\lambda, t) = ( \text{Data} - \text{Model AC}_5\text{F} ) / \sigma \chi$$

$$\chi^2 / (397155 - 5117) = 0.892 \Rightarrow 1.007$$

4565x87



6.87

-6.54

bad:303=0.076%  $\lambda$  (Å)  $z = 1.65693$

1 > +6.0σ

1 < -6.0σ