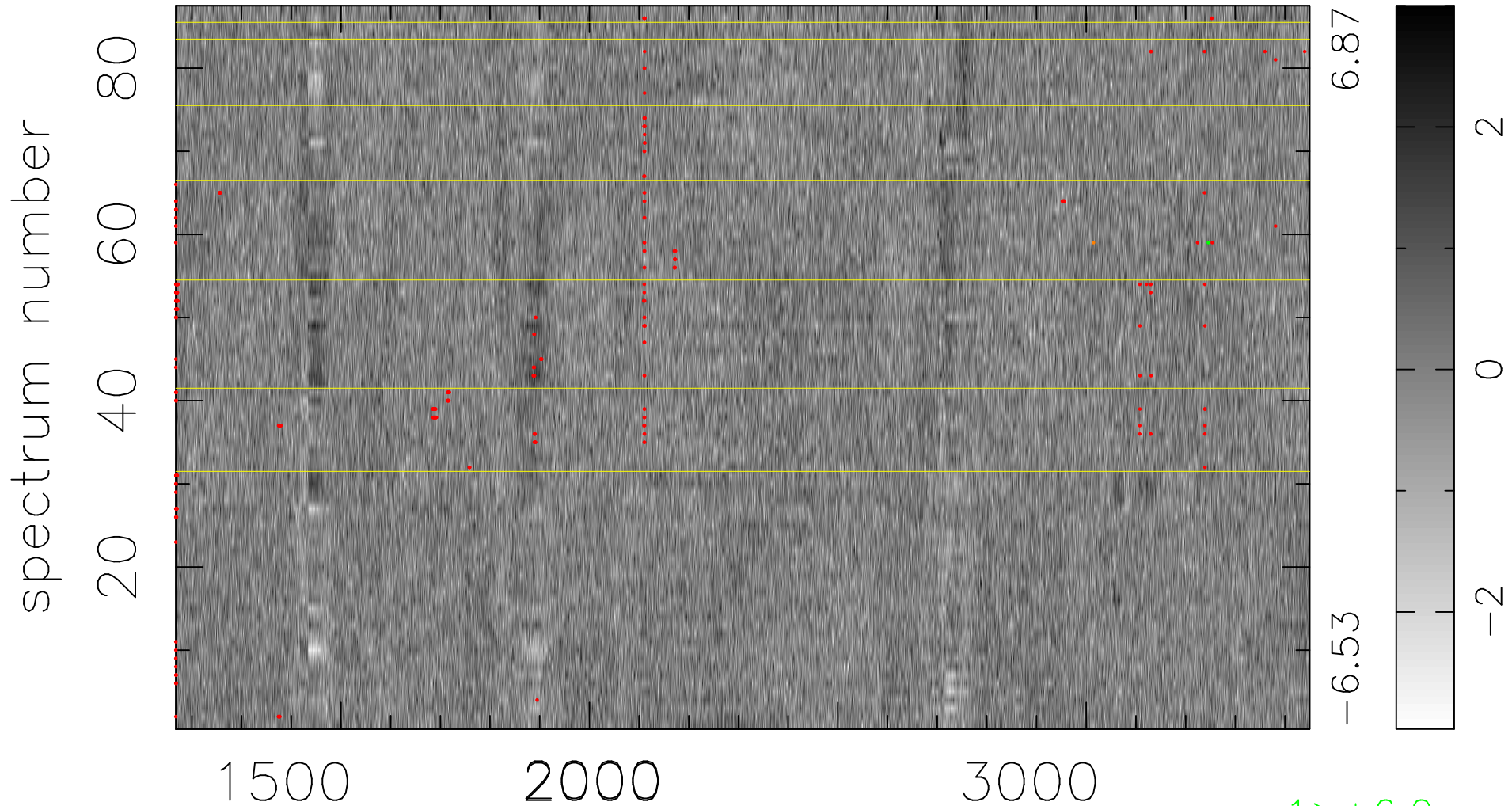


$$\chi(\lambda,t) = (\text{Data} - \text{Model } AC_5) / \sigma \chi$$

$$\chi^2 / (397155 - 5030) = 0.894 \Rightarrow 1.007$$

4565x87



bad:303=0.076% λ (Å) $z = 1.65693$

1 > +6.0 σ

1 < -6.0 σ