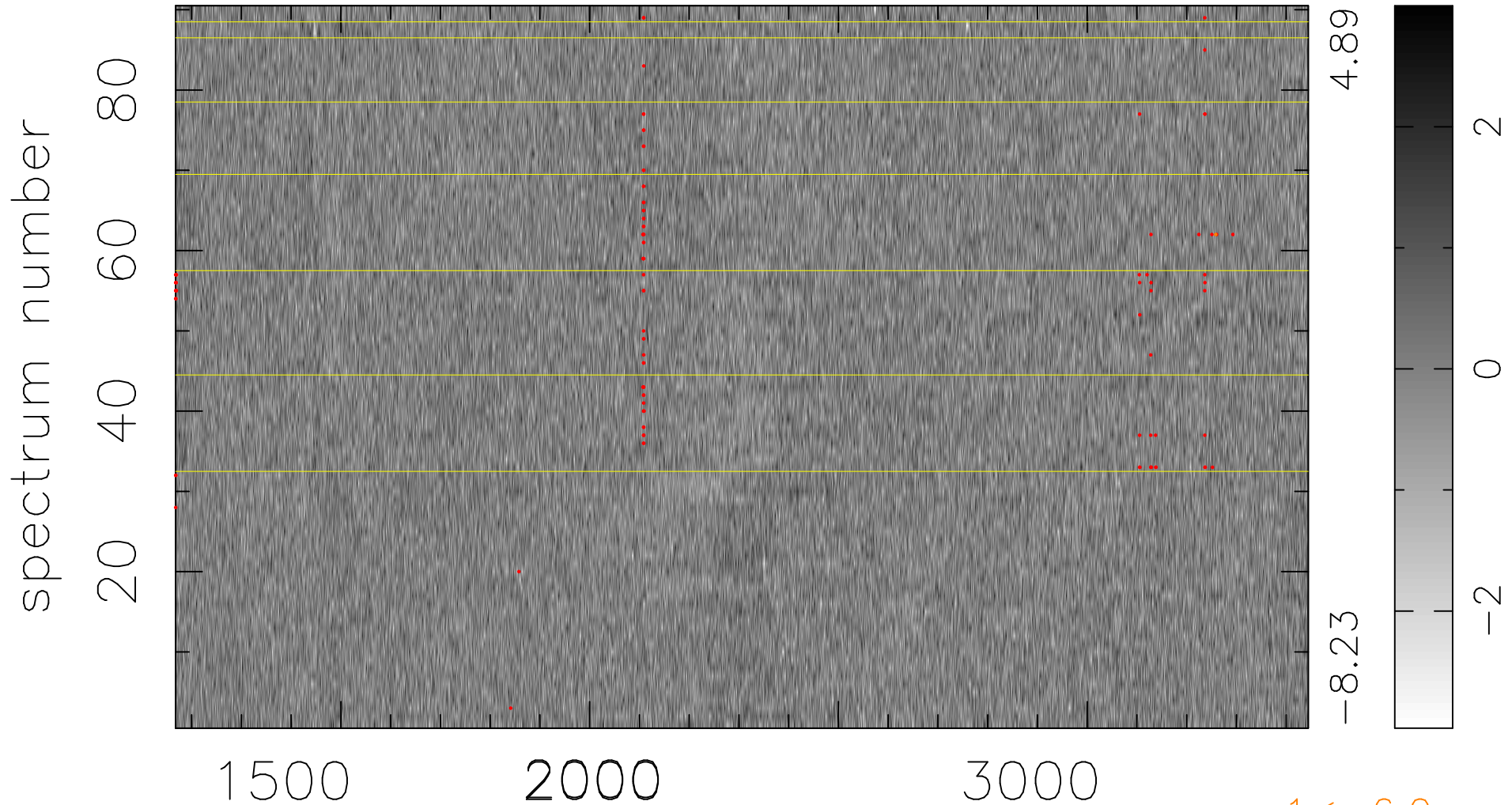


$$\chi(\lambda, t) = (\text{Data} - \text{Model } \text{AC}_5\text{B}_5\text{F}) / \sigma \chi$$

$$\chi^2 / (409860 - 5276) = 0.884 \Rightarrow 1.007$$

4554x90



1 < -6.0σ

bad:108=0.026% λ (Å) z = 1.65976