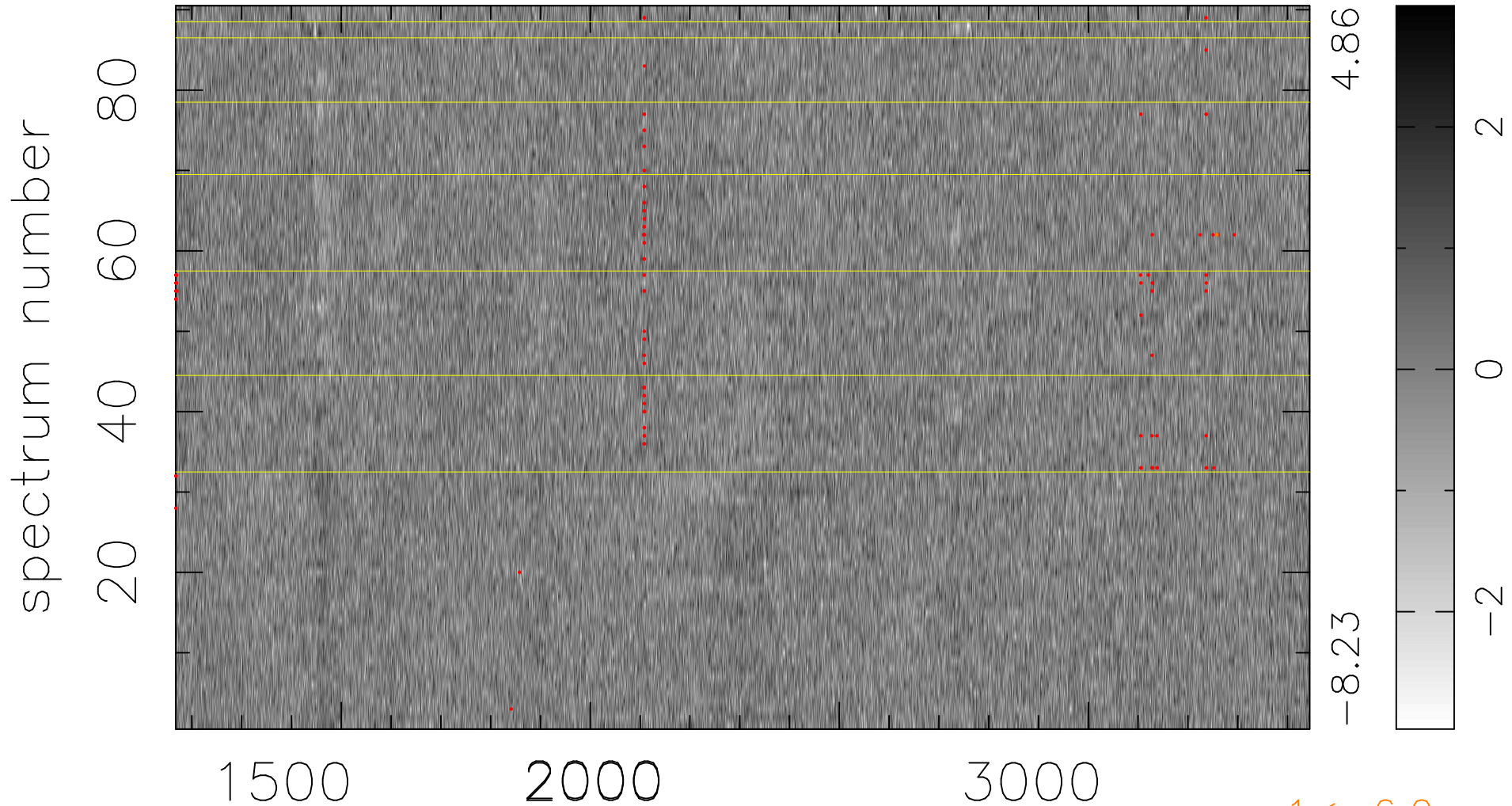


$$\chi(\lambda,t) = ( \text{Data} - \text{Model } AC_5 ) / \sigma \chi$$

$$\chi^2 / (409860 - 5044) = 0.889 \Rightarrow 1.007$$

4554x90



$1 < -6.0\sigma$

bad:108=0.026%  $\lambda$  (Å)  $z = 1.65976$