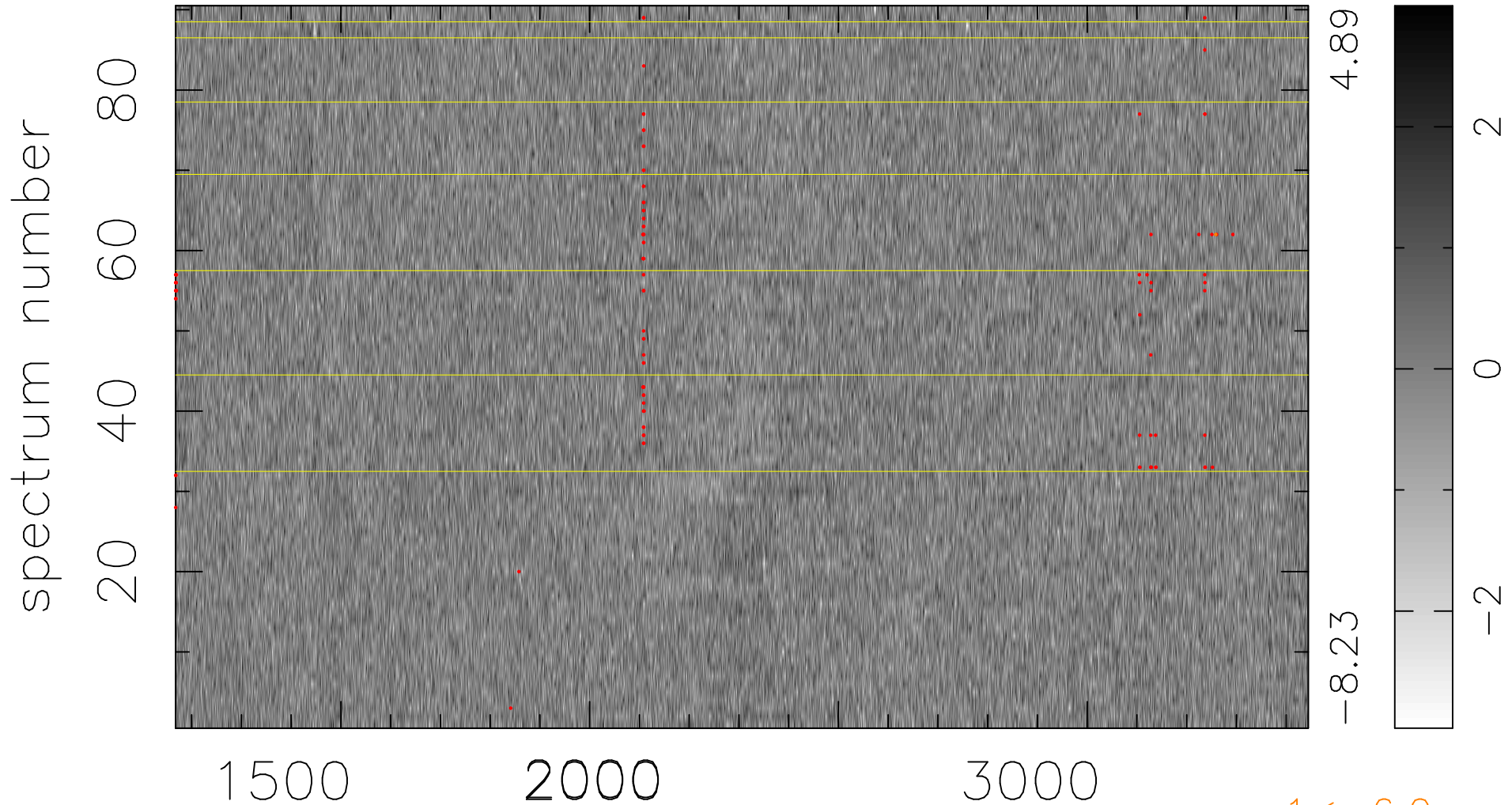


$$\chi(\lambda, t) = ( \text{Data} - \text{Model } \text{AC}_5\text{B}_5\text{F} ) / \sigma \chi$$

$$\chi^2 / (409860 - 5276) = 0.884 \Rightarrow 1.007$$

4554x90



4.89

-8.23

2

0

-2

1 < -6.0σ

bad:108=0.026%  $\lambda$  (Å)  $z = 1.65976$