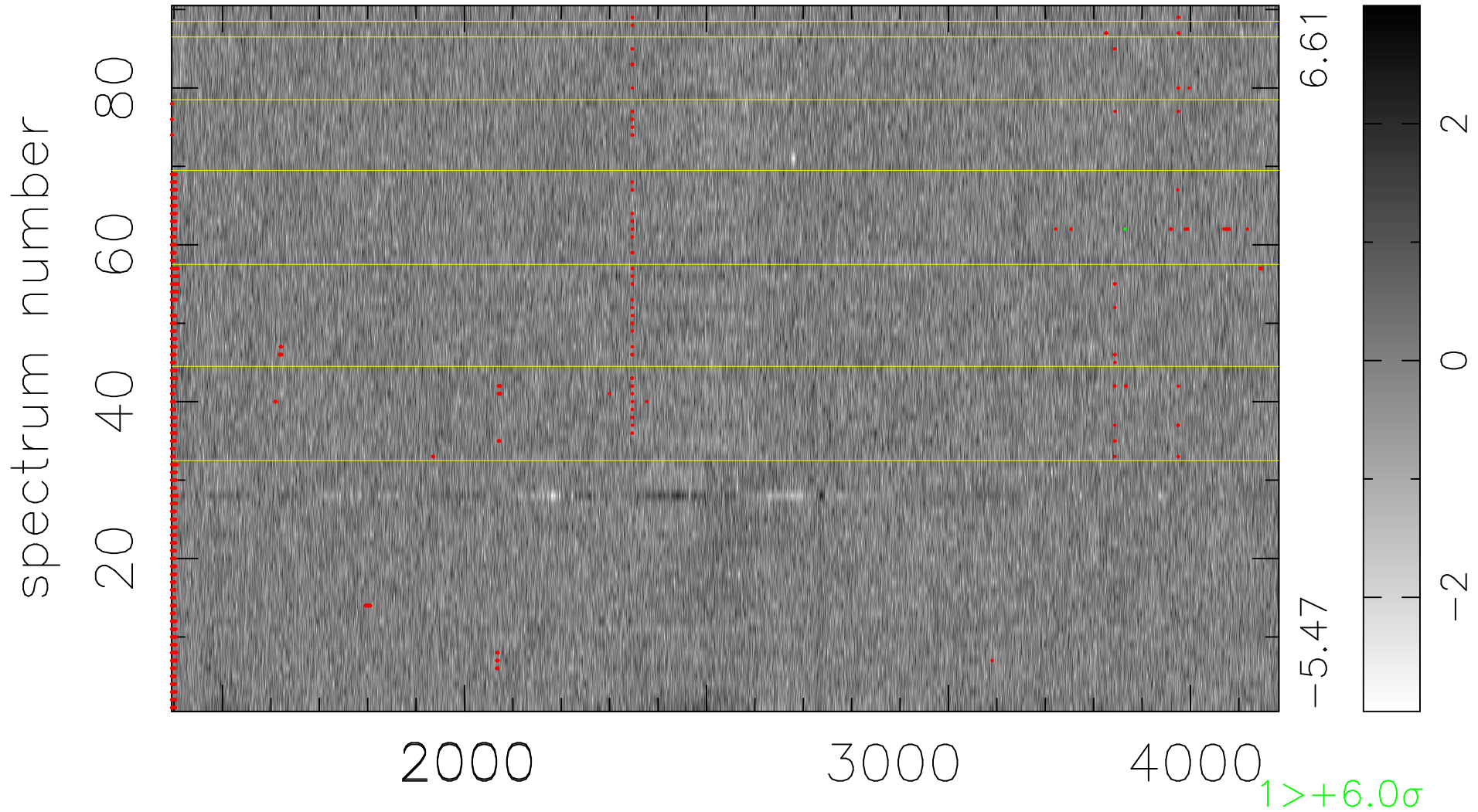


$$\chi(\lambda, t) = ( \text{Data} - \text{Model } \text{AC}_5\text{B}_4\text{F} ) / \sigma \chi$$

$$\chi^2 / (411840 - 5199) = 0.900 \Rightarrow 1.007$$

4576 × 90



bad:1392=0.34%  $\lambda$  (Å)  $z = 1.38329$