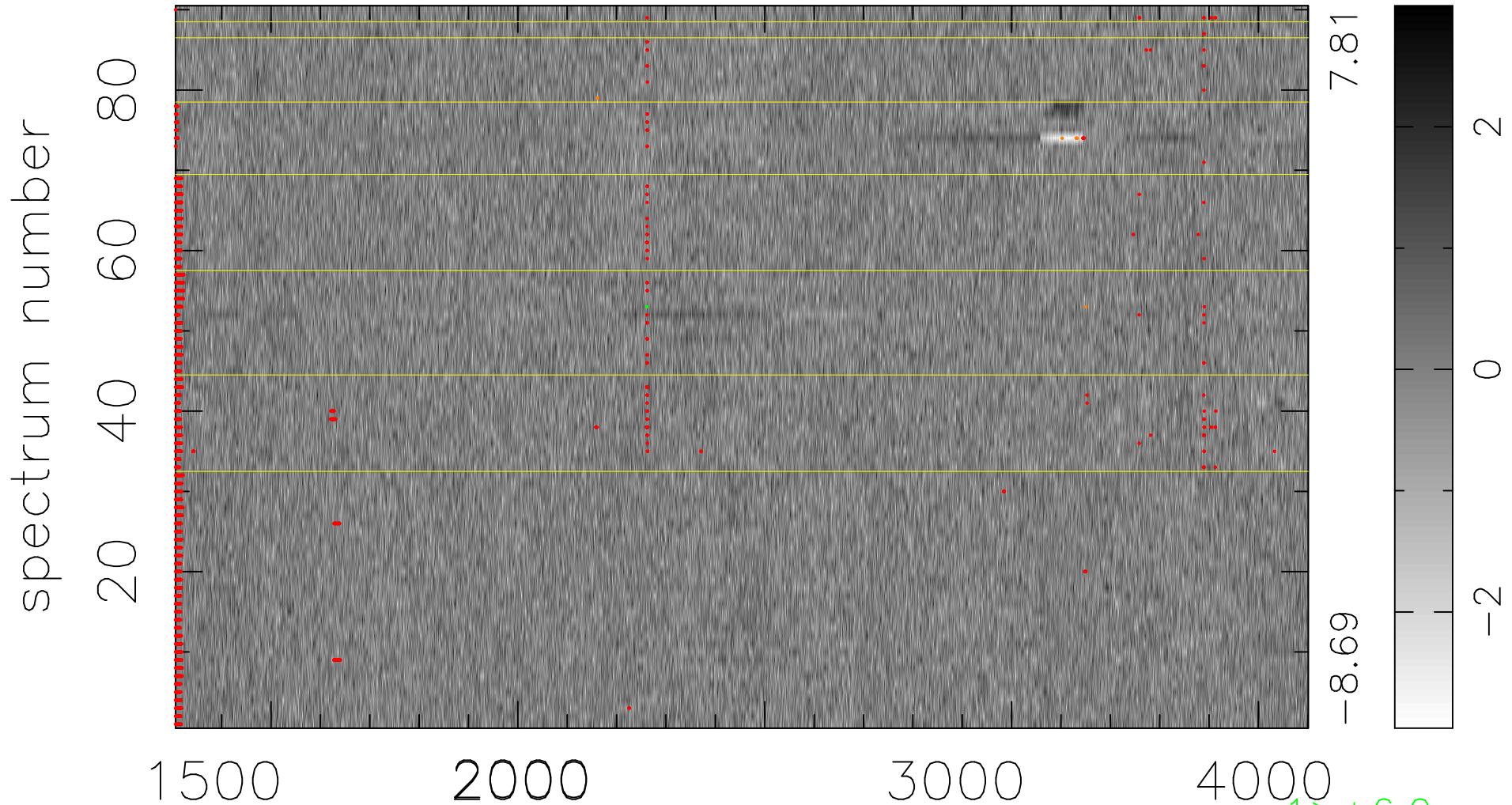


$$\chi(\lambda, t) = (\text{Data} - \text{Model } \text{AC}_5\text{B}_4\text{F}) / \sigma \chi$$

$$\chi^2 / (413010 - 5219) = 0.906 \Rightarrow 1.008$$

4589 × 90



bad:1925=0.47% λ (Å) $z = 1.47821$

1 > +6.0σ

7 < -6.0σ