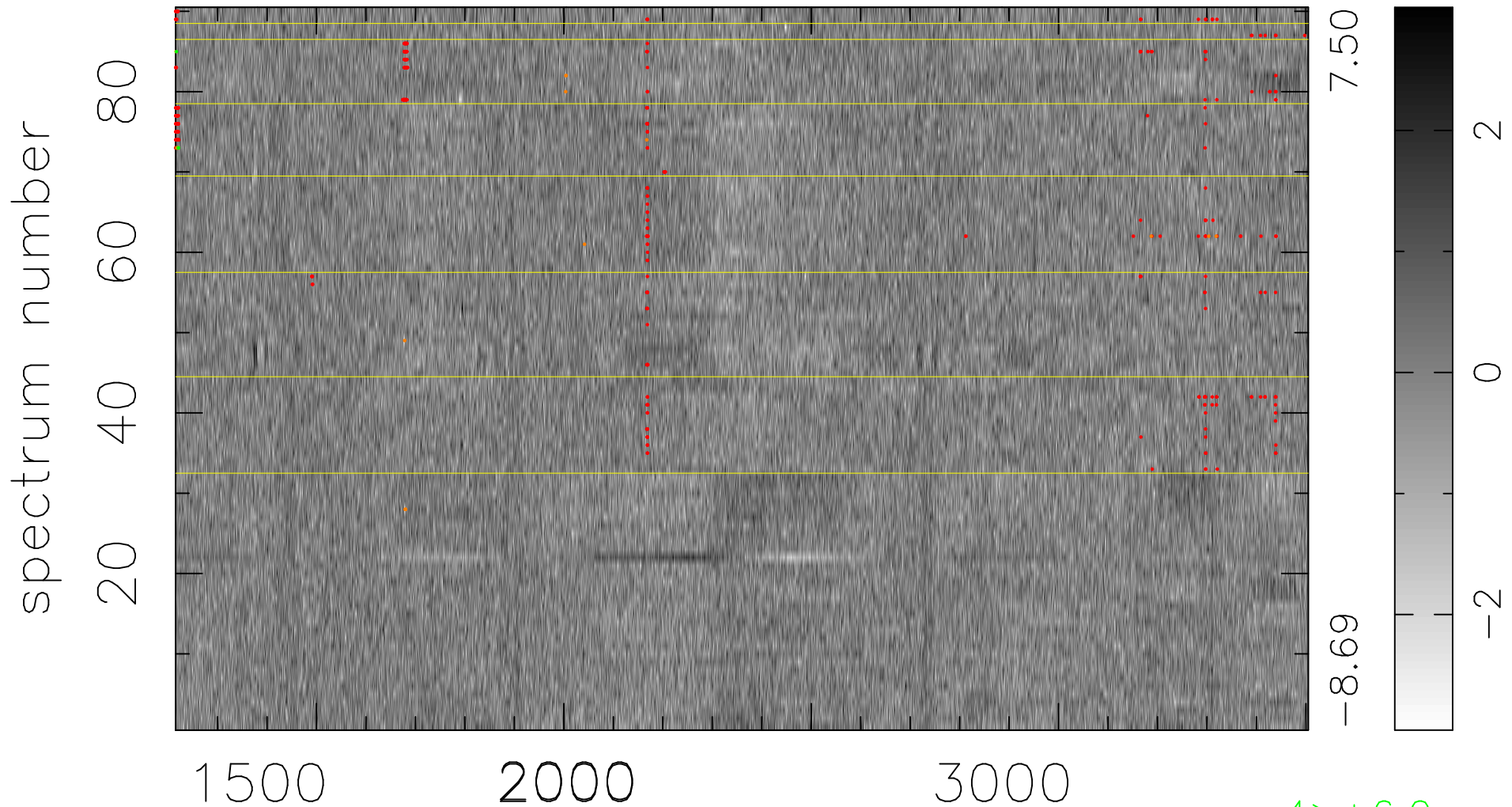


$$\chi(\lambda, t) = (\text{Data} - \text{Model } \text{AC}_5\text{B}_5\text{F}) / \sigma \chi$$

$$\chi^2 / (412200 - 5261) = 0.972 \Rightarrow 1.009$$

4580x90



bad:357=0.087% λ (Å) $z = 1.58673$

4 > +6.0 σ
16 < -6.0 σ