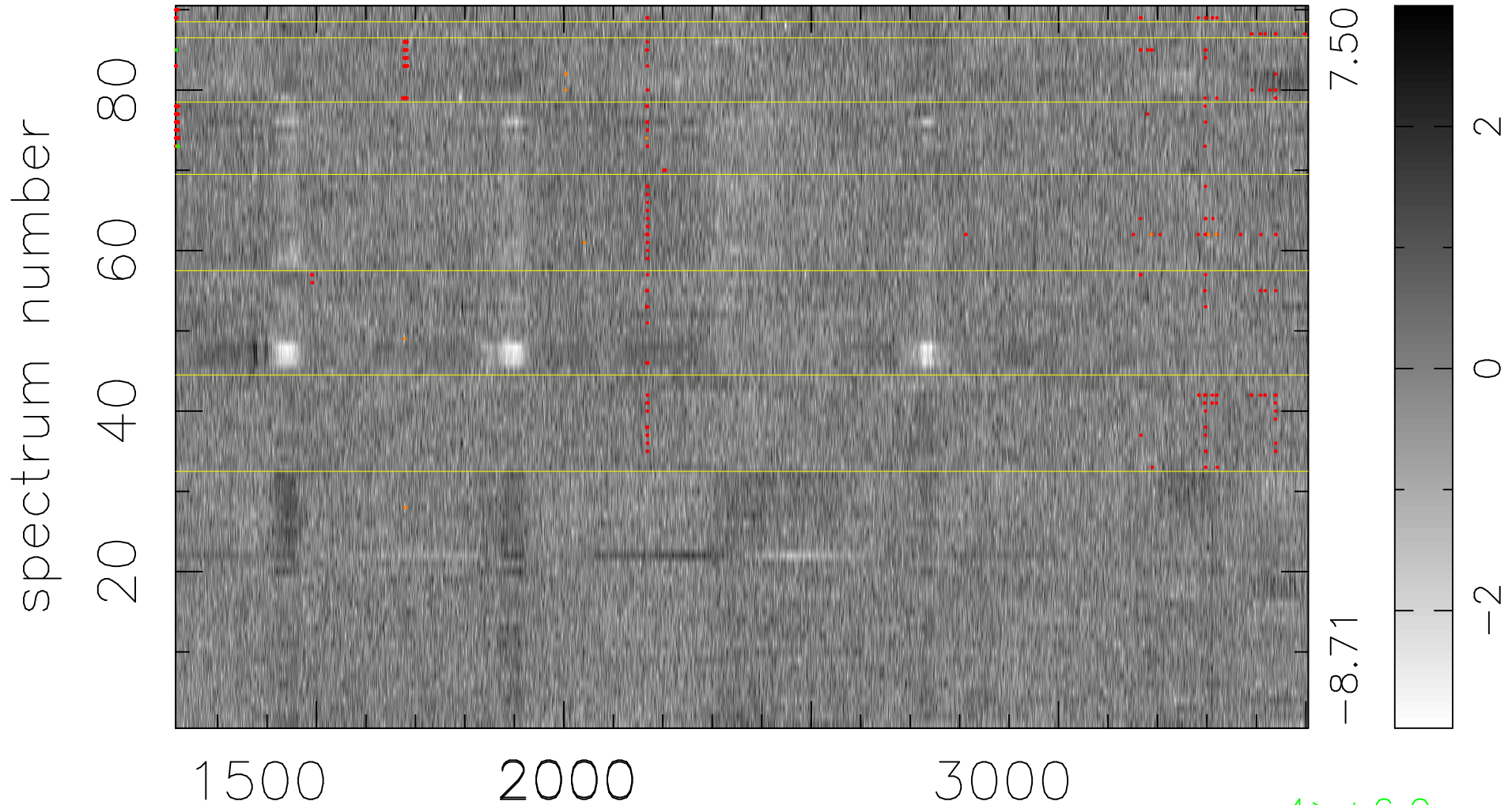


$$\chi(\lambda, t) = ( \text{Data} - \text{Model AC}_5\text{F} ) / \sigma \chi$$

$$\chi^2 / (412200 - 5148) = 1.014 \Rightarrow 1.007$$

4580x90



bad:357=0.087%  $\lambda$  (Å)  $z = 1.58673$

4 > +6.0 $\sigma$   
16 < -6.0 $\sigma$