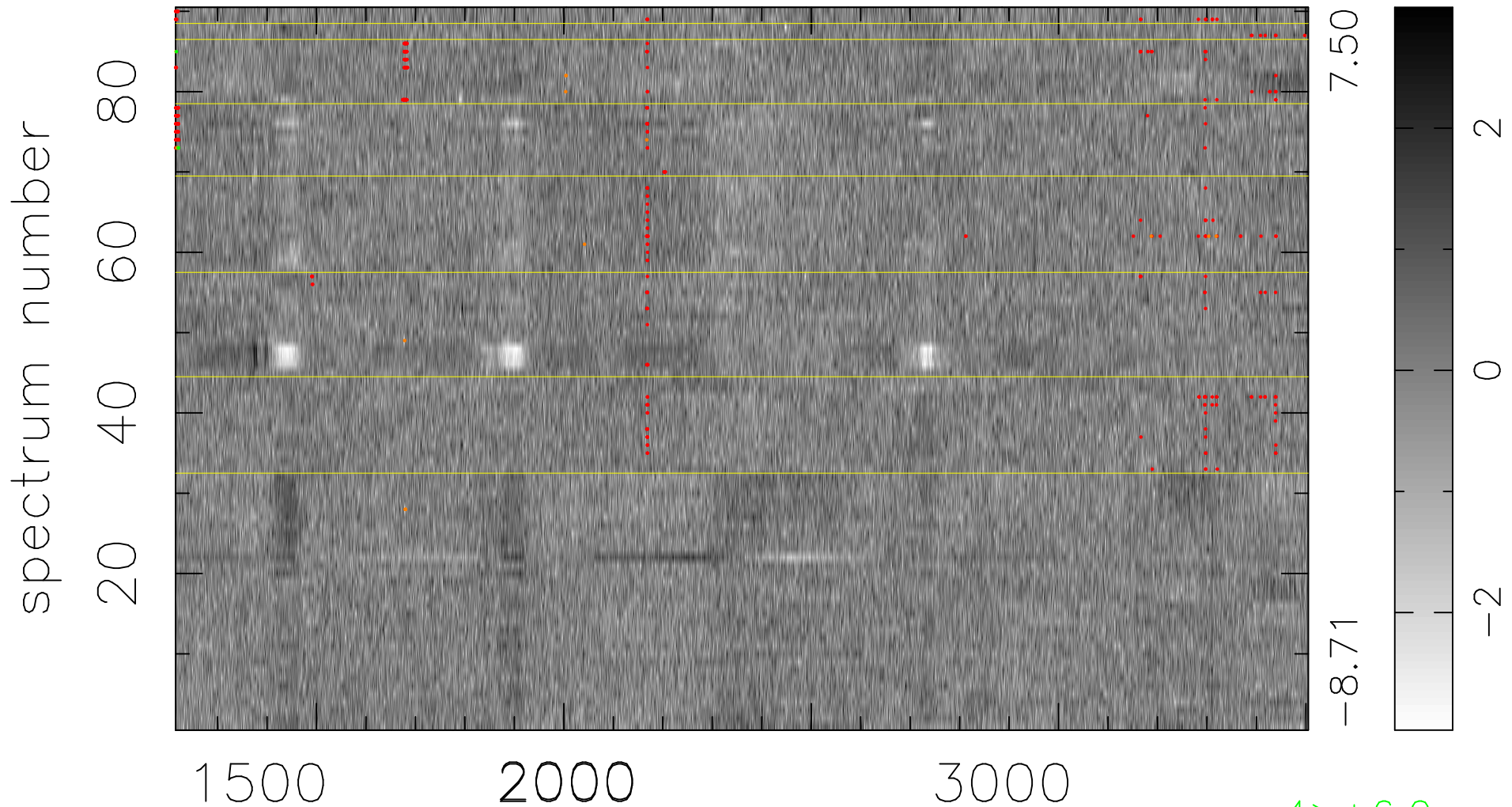


$$\chi(\lambda,t) = ( \text{Data} - \text{Model } AC_5 ) / \sigma \chi$$

$$\chi^2 / (412200 - 5058) = 1.016 \Rightarrow 1.007$$

4580x90



bad:357=0.087%  $\lambda$  (Å)  $z = 1.58673$

4 > +6.0 $\sigma$   
16 < -6.0 $\sigma$