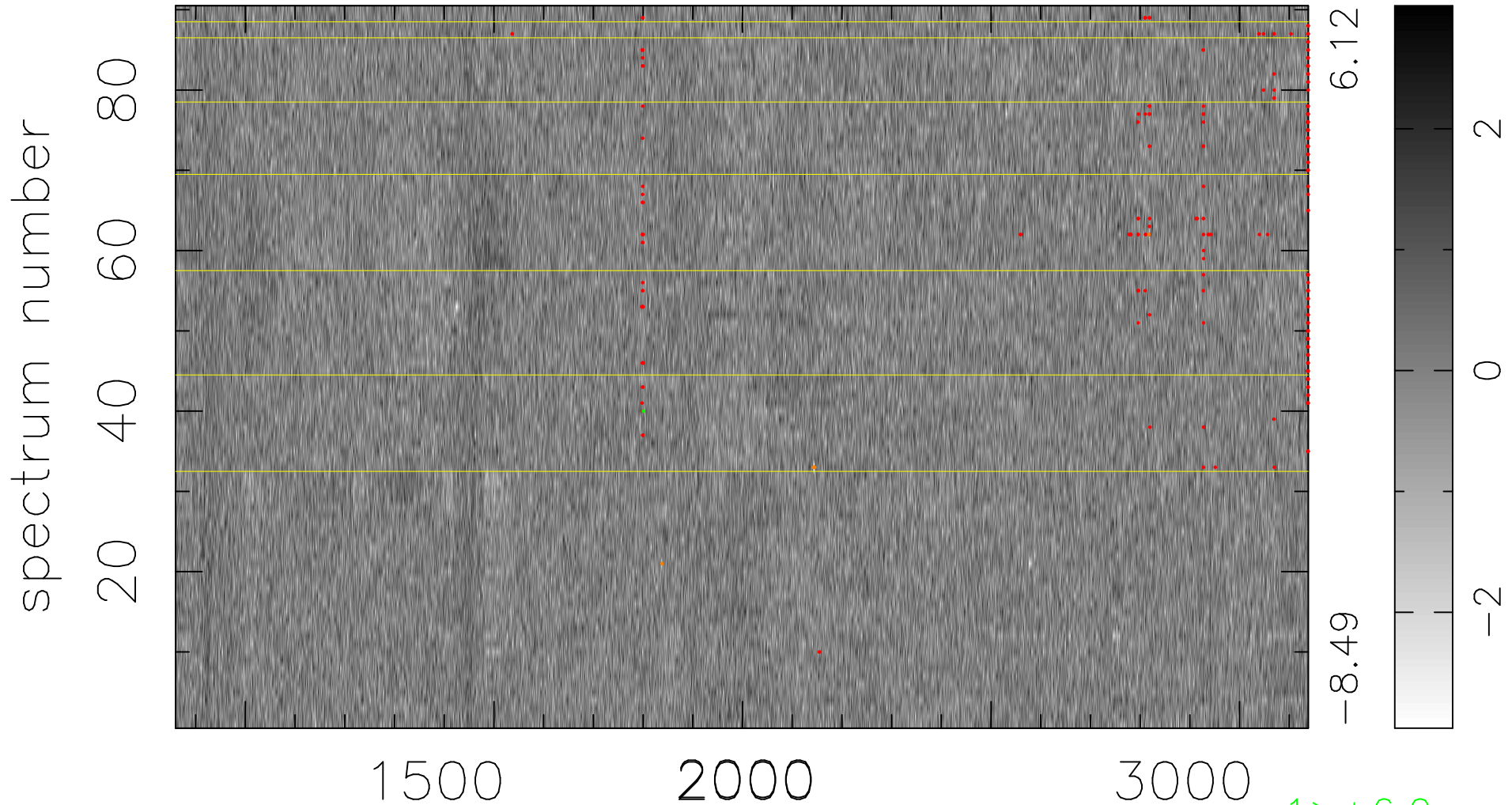


$$\chi(\lambda, t) = (\text{Data} - \text{Model AC}_5\text{B}_7\text{F}) / \sigma \chi$$

$$\chi^2 / (410220 - 5431) = 0.899 \Rightarrow 1.009$$

4558x90



6.12
-8.49

2
0
-2

bad:227=0.055% λ (Å) $z = 2.06670$

1 > +6.0σ

9 < -6.0σ