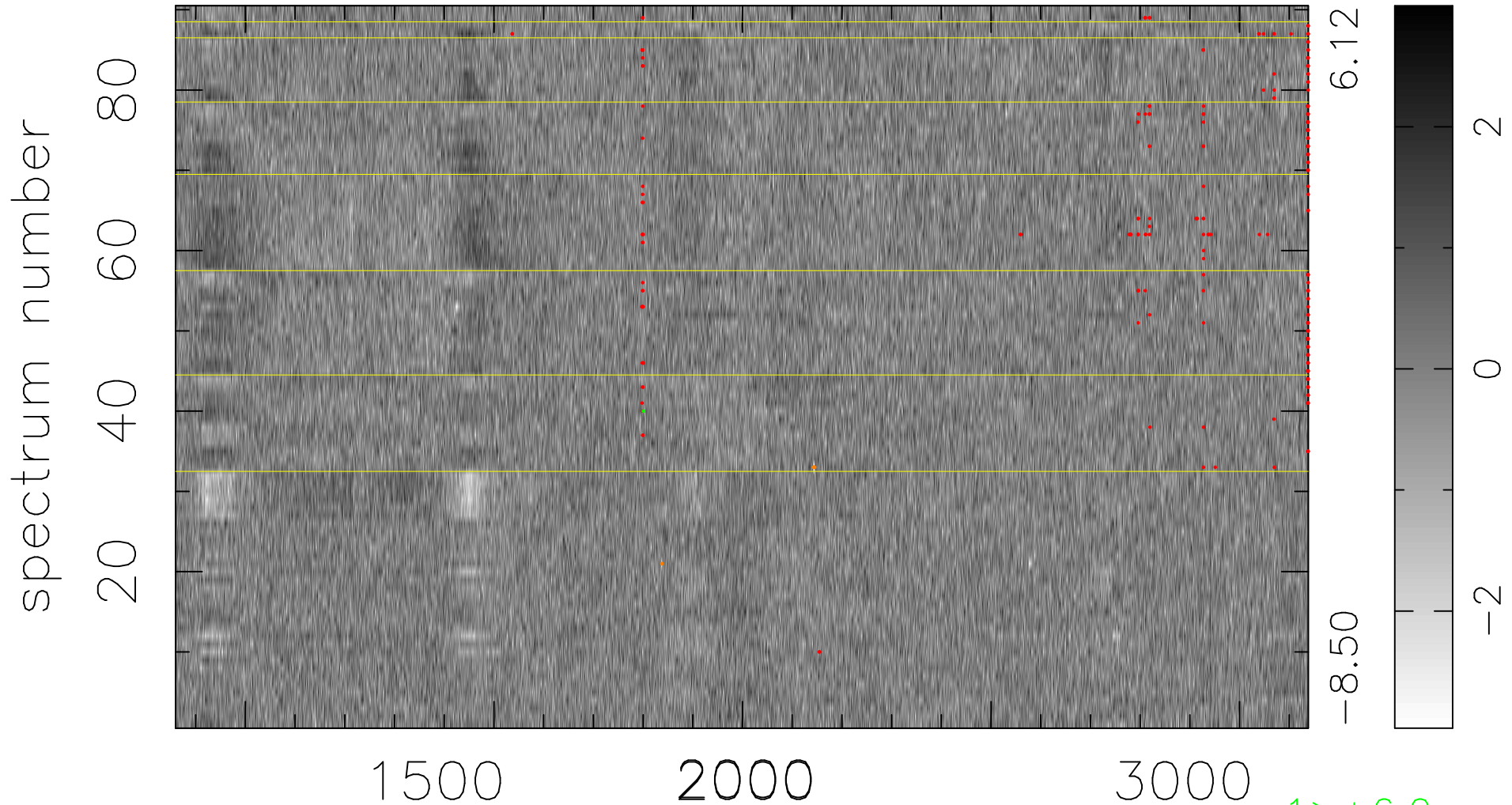


$$\chi(\lambda, t) = ( \text{Data} - \text{Model AC}_5\text{F} ) / \sigma \chi$$

$$\chi^2 / (410220 - 5329) = 0.933 \Rightarrow 1.007$$

4558x90



bad:227=0.055%  $\lambda$  (Å)  $z = 2.06670$

1 > +6.0 $\sigma$

8 < -6.0 $\sigma$