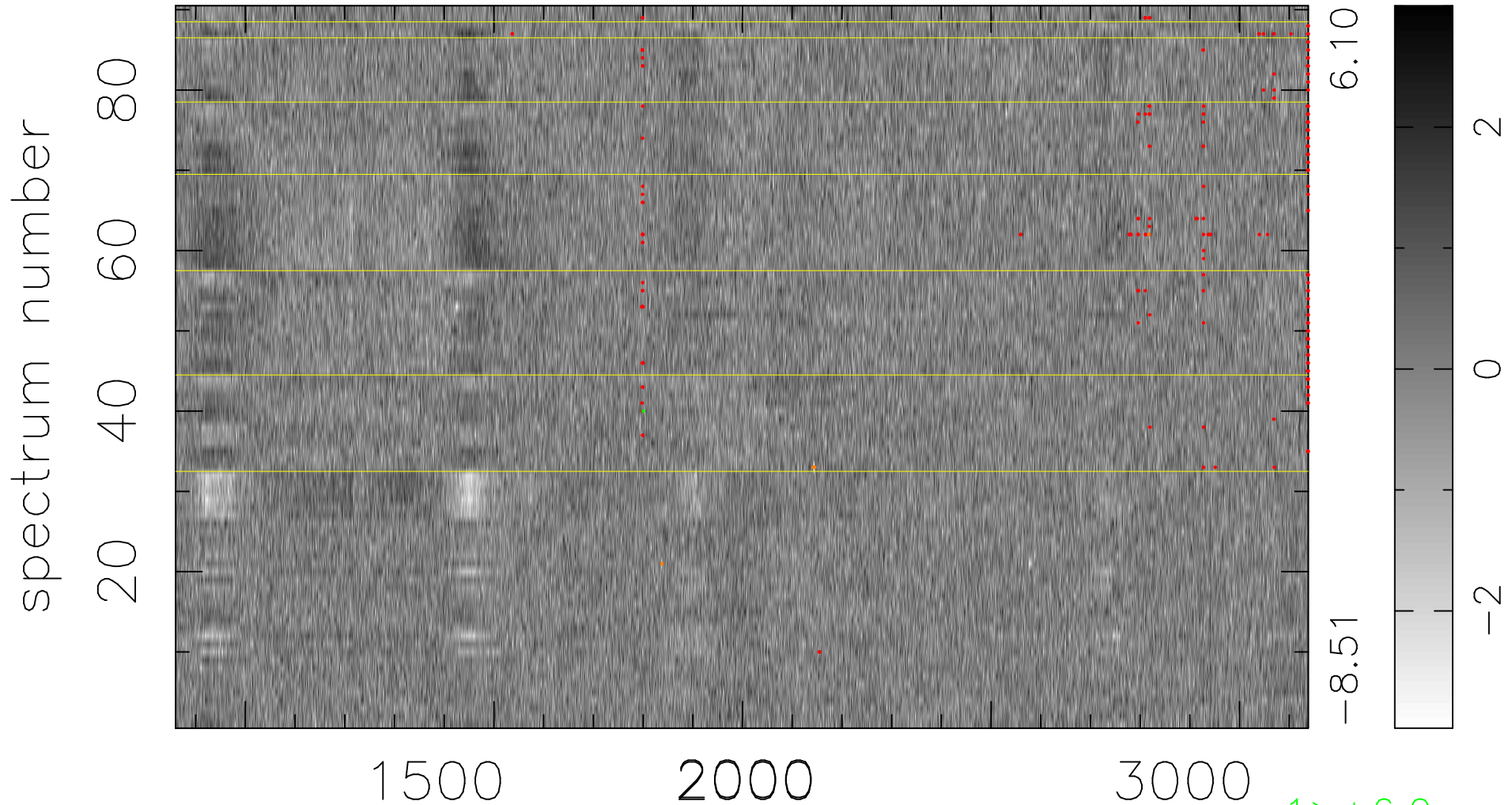


$$\chi(\lambda,t) = (\text{Data} - \text{Model } AC_5) / \sigma \chi$$

$$\chi^2 / (410220 - 5239) = 0.952 \Rightarrow 1.008$$

4558x90



bad:227=0.055% λ (Å) $z = 2.06670$

1 > +6.0σ

9 < -6.0σ