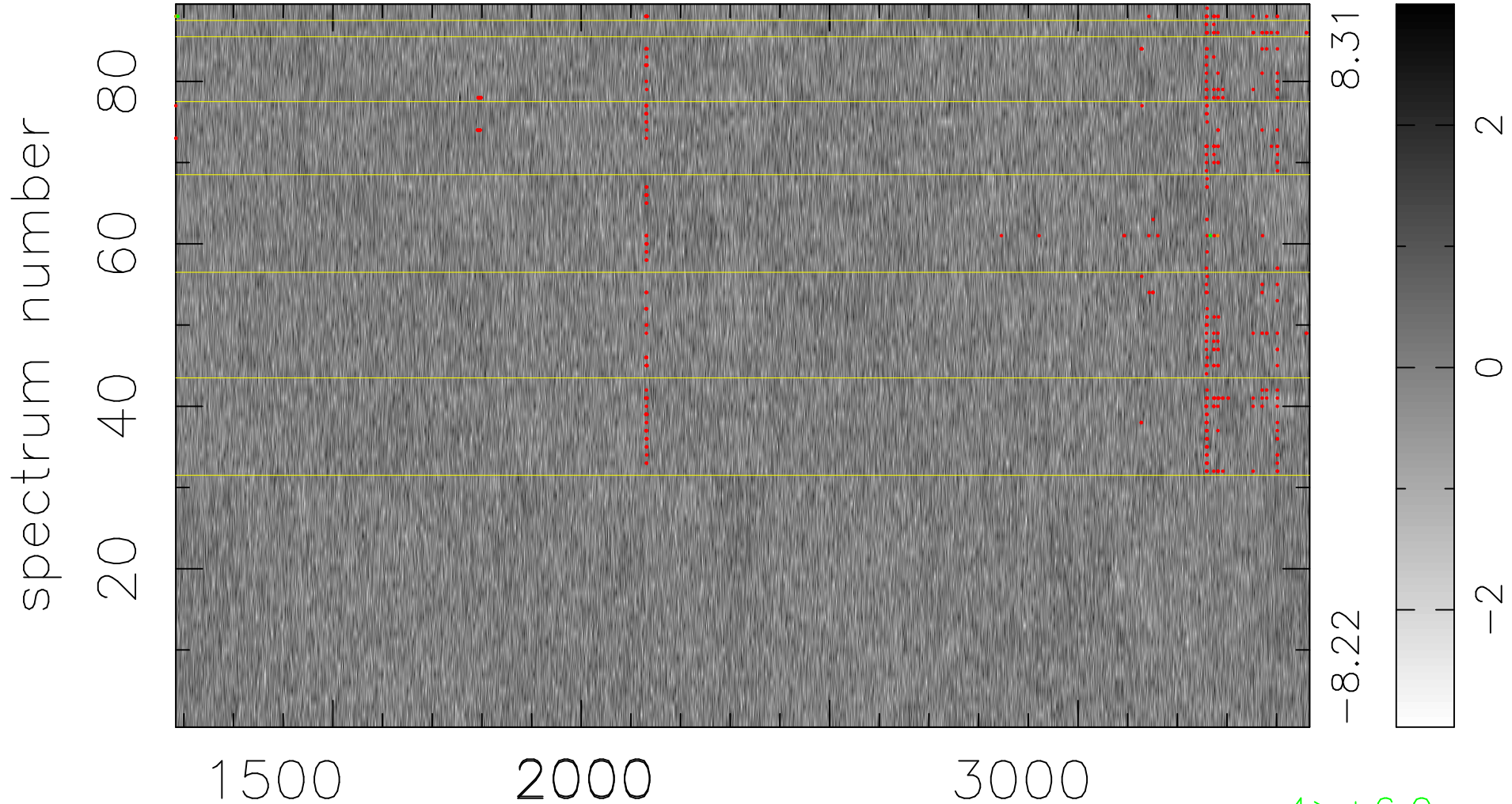


$$\chi(\lambda,t) = ( \text{Data} - \text{Model } AC_5 ) / \sigma \chi$$

$$\chi^2 / (406374 - 5036) = 0.942 \Rightarrow 1.007$$

4566x89



bad:375=0.092%     $\lambda$  (Å)     $z = 1.63166$

4 > +6.0 $\sigma$

5 < -6.0 $\sigma$