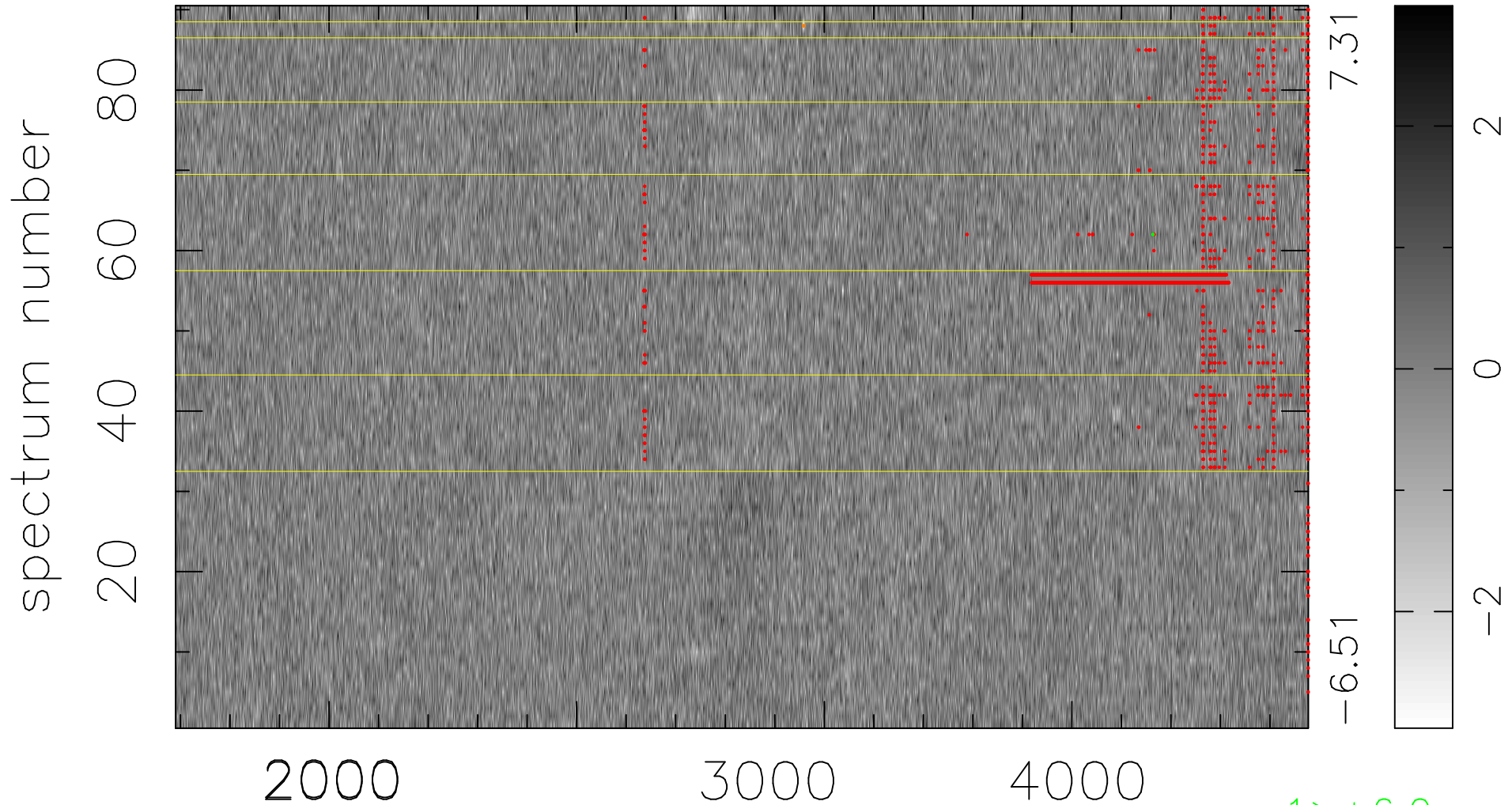


$$\chi(\lambda, t) = ( \text{Data} - \text{Model } \text{AC}_5\text{B}_4\text{F} ) / \sigma \chi$$

$$\chi^2 / (411750 - 5211) = 0.893 \Rightarrow 1.007$$

4575x90



bad:2431=0.59%  $\lambda$  (Å)  $z = 1.08475$

1 > +6.0 $\sigma$

2 < -6.0 $\sigma$