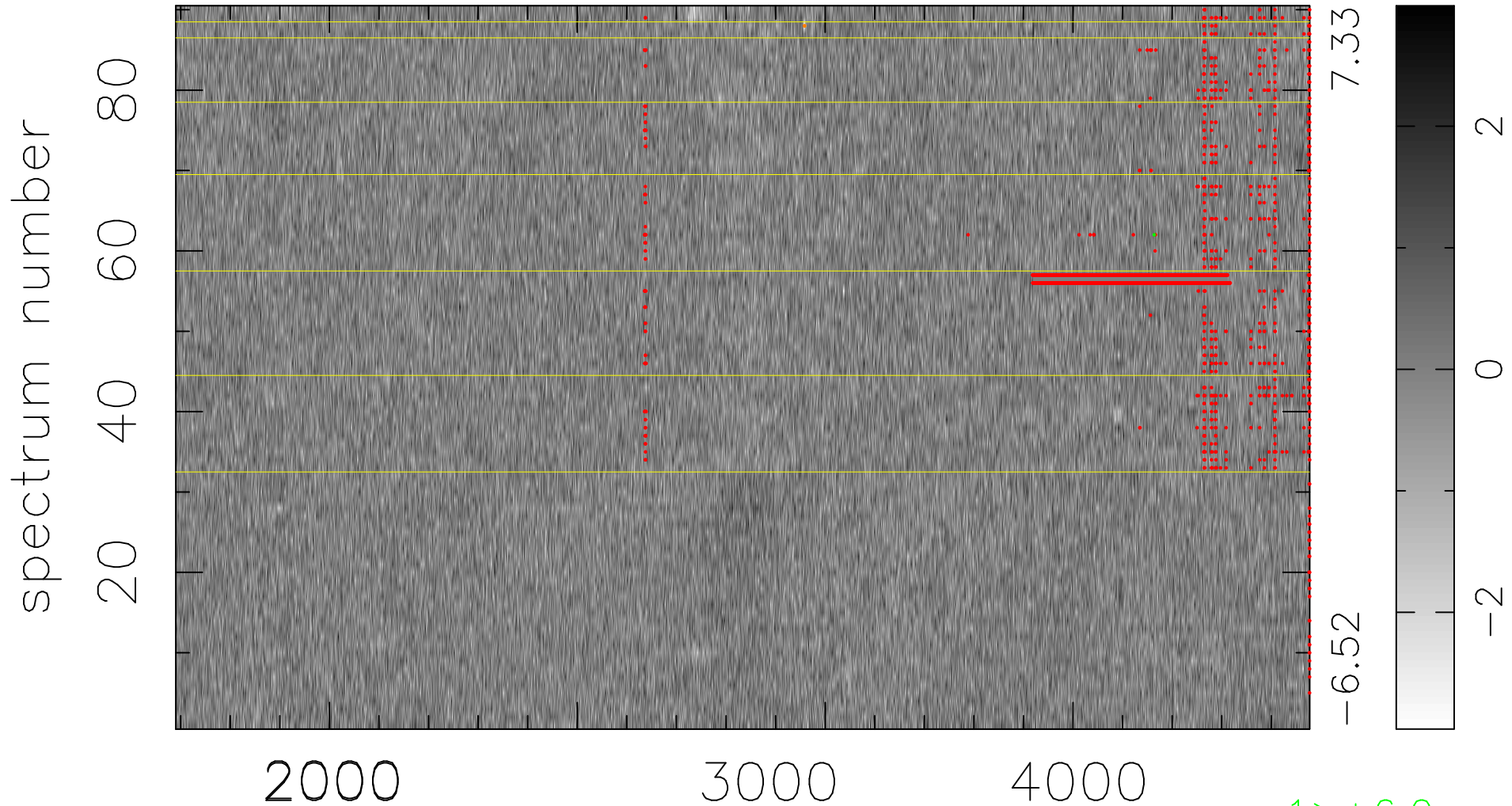


$$\chi(\lambda,t) = (\text{Data} - \text{Model } AC_5) / \sigma \chi$$

$$\chi^2 / (411750 - 4947) = 0.894 \Rightarrow 1.007$$

4575x90



bad:2431=0.59% λ (Å) $z = 1.08475$

1 > +6.0 σ

2 < -6.0 σ