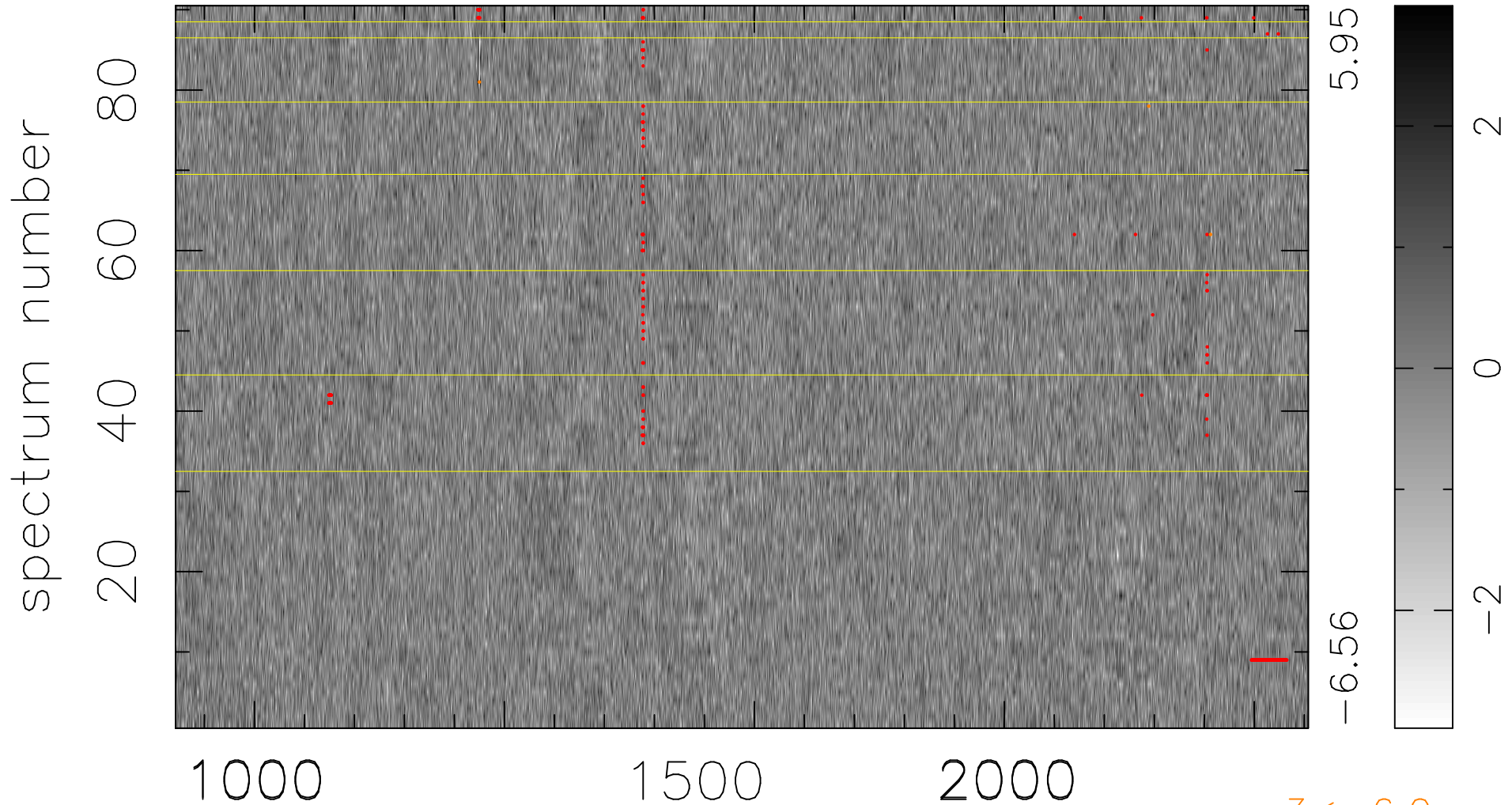


$$\chi(\lambda, t) = (\text{Data} - \text{Model } \text{AC}_5\text{B}_6\text{F}) / \sigma \chi$$

$$\chi^2 / (407880 - 5344) = 0.916 \Rightarrow 1.008$$

4532x90



bad:293=0.072% λ (Å) $z = 2.89958$

$3 < -6.0\sigma$