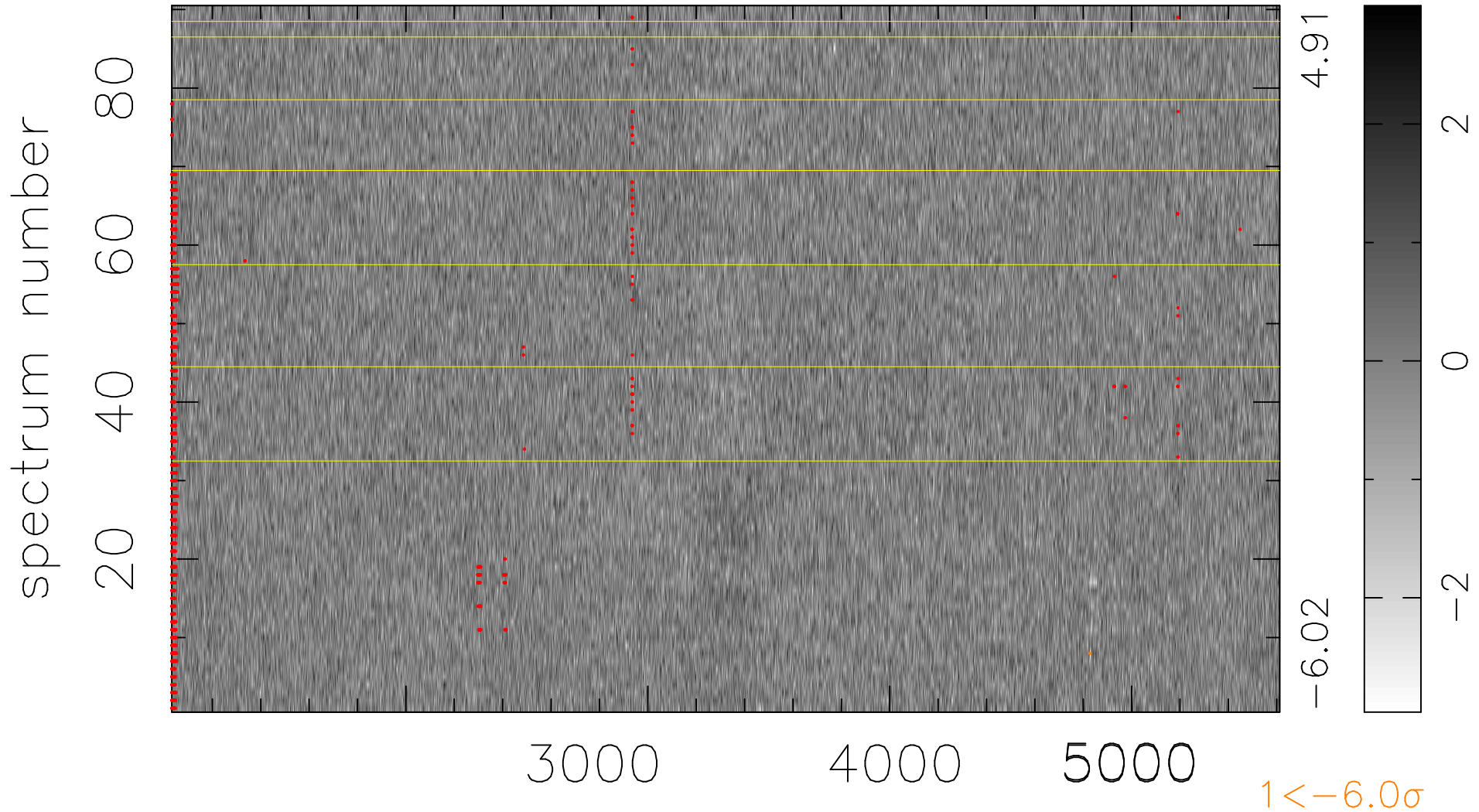


$$\chi(\lambda, t) = ( \text{Data} - \text{Model } \text{AC}_5\text{B}_3\text{F} ) / \sigma \chi$$

$$\chi^2 / (412290 - 5137) = 0.899 \Rightarrow 1.008$$

4581 × 90



bad:1327=0.32%  $\lambda$  (Å)  $z = 0.79056$