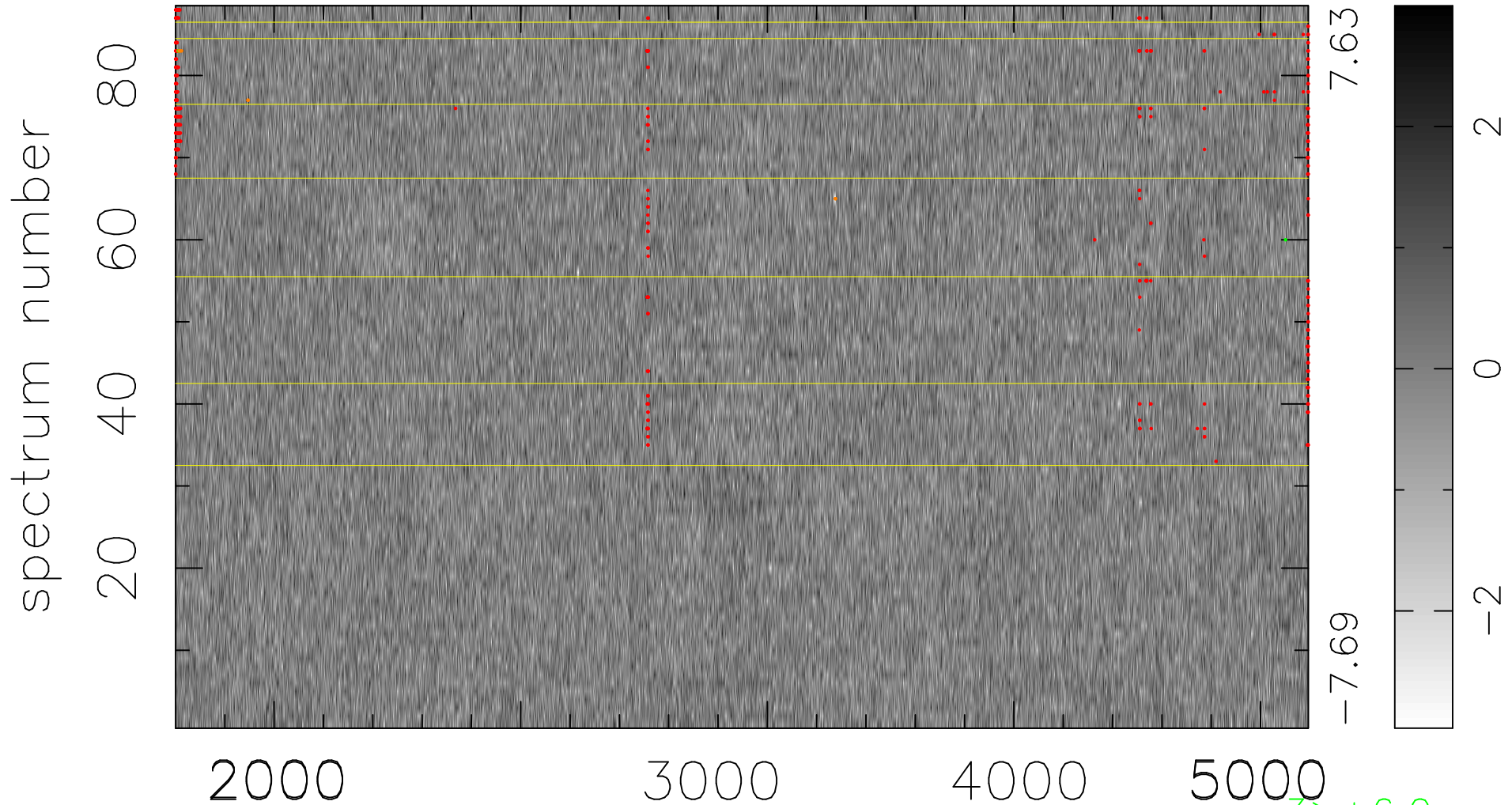


$$\chi(\lambda, t) = (\text{Data} - \text{Model } \text{AC}_5\text{B}_4\text{F}) / \sigma \chi$$

$$\chi^2 / (404272 - 5180) = 0.900 \Rightarrow 1.007$$

4594 × 88



bad:459=0.11%

λ (Å) $z = 0.97219$

3 > +6.0σ

9 < -6.0σ